

Local Market Update – April 2012

A RESEARCH TOOL PROVIDED BY THE INDIANA ASSOCIATION OF REALTORS®



Allen County

+ 8.9%

Change in
New Listings

+ 3.6%

Change in
Closed Sales

- 2.3%

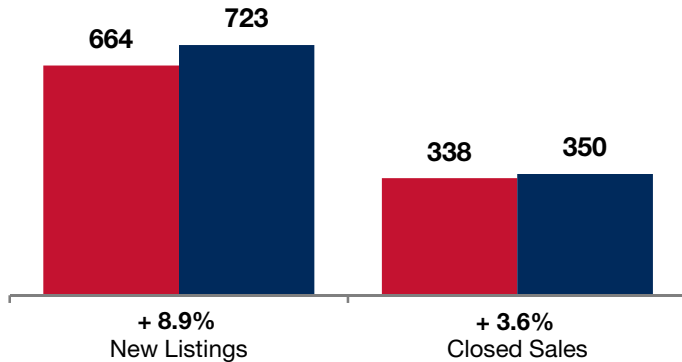
Change in
Median Sales Price

	April			Year to Date		
	2011	2012	+ / -	2011	2012	+ / -
New Listings	664	723	+ 8.9%	2,436	2,693	+ 10.6%
Closed Sales	338	350	+ 3.6%	1,037	1,173	+ 13.1%
Median Sales Price	\$107,000	\$104,500	- 2.3%	\$100,000	\$101,000	+ 1.0%
Percent of Original List Price Received at Sale*	95.2%	92.4%	- 2.9%	94.7%	92.3%	- 2.5%
Months Supply of Inventory	7.6	6.8	- 11.1%	--	--	--
Inventory of Homes for Sale	2,375	2,312	- 2.7%	--	--	--

* Does not account for list price from any previous listing contracts. | Activity for one month can sometimes look extreme due to small sample size.

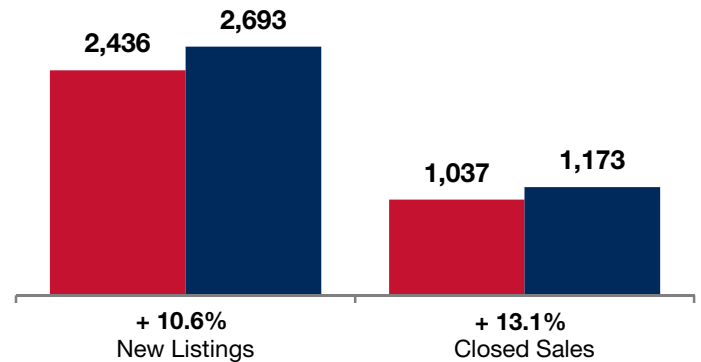
April

■ 2011 ■ 2012



Year to Date

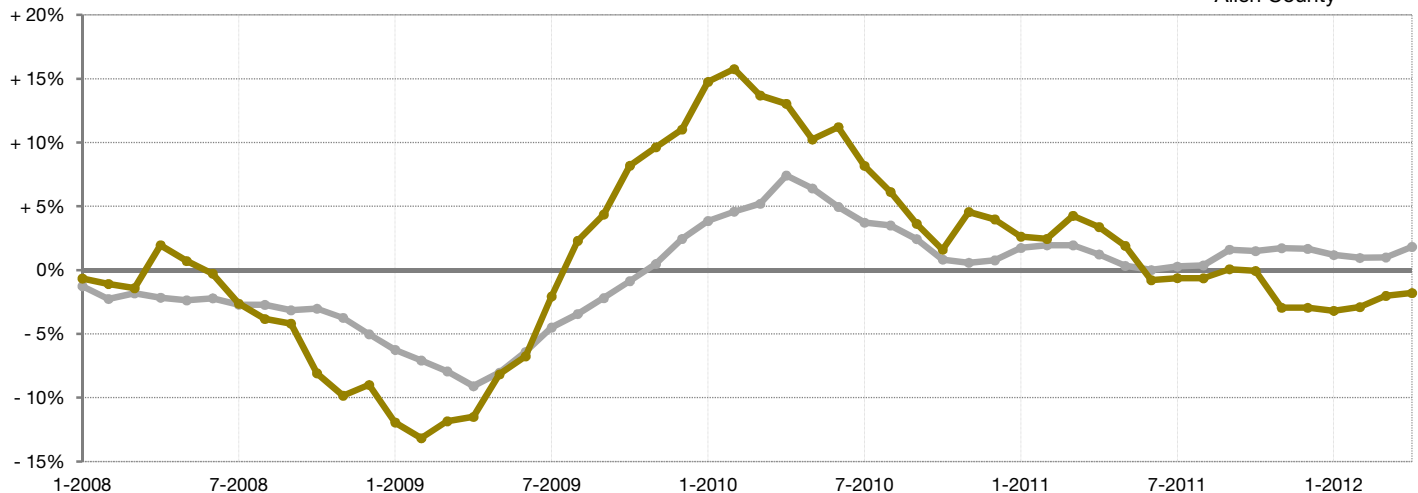
■ 2011 ■ 2012



Change in Median Sales Price from Prior Year (6-Month Average)**

Entire State —

Allen County —



** Each dot represents the change in median sales price from the prior year using a 6-month weighted average. This means that each of the 6 months used in a dot are proportioned according to their share of sales during that period. | Data obtained from participating Multiple Listing Services (MLSs) and Broker Listing Cooperatives® (BLCs®). Powered by 10K Research and Marketing.