

Local Market Update – December 2013

A RESEARCH TOOL PROVIDED BY THE INDIANA ASSOCIATION OF REALTORS®



Starke County

+ 1.8%

Change in
New Listings
Last 3 Mos. Compared
to a Year Ago

- 2.3%

Change in
Closed Sales
Last 3 Mos. Compared
to a Year Ago

+ 25.2%

Change in
Median Sales Price
Last 3 Mos. Compared
to a Year Ago

October through December January through December

	2012	2013	+ / -	2012	2013	+ / -
New Listings	55	56	+ 1.8%	318	363	+ 14.2%
Closed Sales	43	42	- 2.3%	175	221	+ 26.3%
Median Sales Price	\$79,000	\$98,900	+ 25.2%	\$69,900	\$81,500	+ 16.6%
Percent of Original List Price Received at Sale*	85.6%	93.0%	+ 8.6%	86.1%	88.0%	+ 2.2%

* Does not account for list price from any previous listing contracts. | Activity for one month can sometimes look extreme due to small sample size.

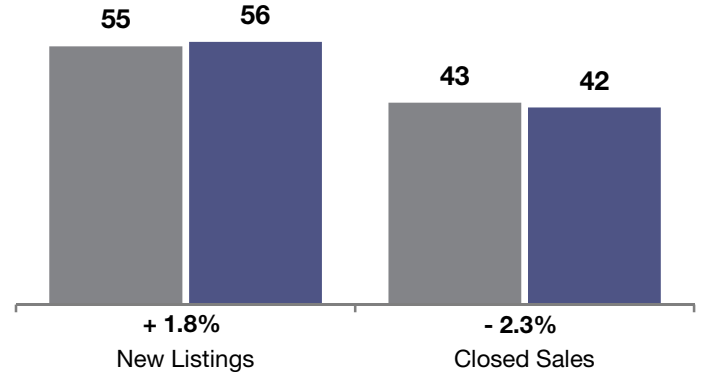
January through December

■ 2012 ■ 2013



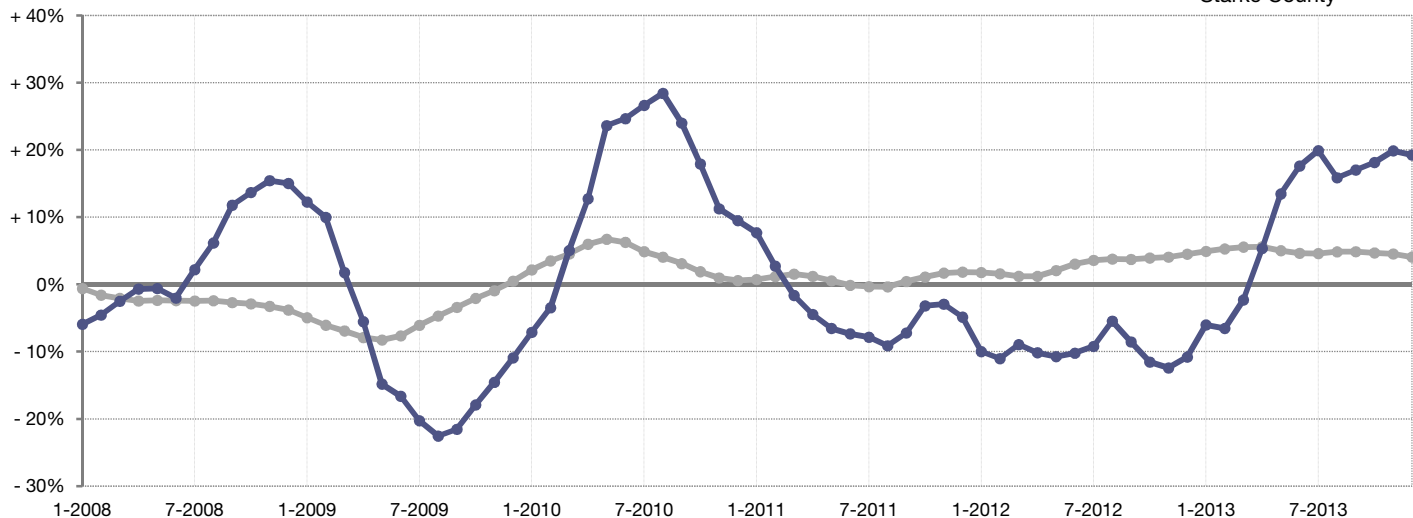
October through December

■ 2012 ■ 2013



Change in Median Sales Price from Prior Year (6-Month Average)**

Entire State —
Starke County —



** Each dot represents the change in median sales price from the prior year using a 6-month weighted average. This means that each of the 6 months used in a dot are proportioned according to their share of sales during that period. | Data obtained from participating Multiple Listing Services (MLSs) and Broker Listing Cooperatives® (BLCs®).
Powered by 10K Research and Marketing.