

# Local Market Update – November 2011

A RESEARCH TOOL PROVIDED BY THE COLUMBUS BOARD OF REALTORS®  
BASED ON RESIDENTIAL LISTING DATA ONLY

## Worthington City School District

Franklin County

### November

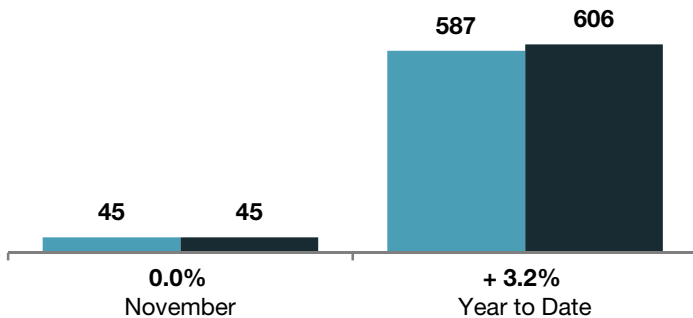
### Year to Date

	2010	2011	+ / -	2010	2011	+ / -
Closed Sales	45	45	0.0%	587	606	+ 3.2%
In Contracts	43	54	+ 25.6%	607	651	+ 7.2%
Average Sales Price*	\$205,949	\$191,940	- 6.8%	\$205,340	\$204,792	- 0.3%
Median Sales Price*	\$200,010	\$178,000	- 11.0%	\$182,000	\$179,250	- 1.5%
Average Price per Square Foot*	\$106.10	\$106.27	+ 0.2%	\$111.55	\$107.46	- 3.7%
Percent of Original List Price Received*	94.2%	91.3%	- 3.1%	93.6%	91.5%	- 2.2%
Percent of Last List Price Received*	97.9%	96.6%	- 1.3%	96.7%	95.9%	- 0.8%
Days on Market Until Sale	84	105	+ 25.5%	69	90	+ 30.2%
New Listings	63	39	- 38.1%	1,167	981	- 15.9%
Median List Price of New Listings	\$165,000	\$199,000	+ 20.6%	\$178,775	\$189,900	+ 6.2%
Median List Price at Time of Sale	\$200,000	\$189,000	- 5.5%	\$185,000	\$185,000	0.0%
Inventory of Homes for Sale	432	301	- 30.3%	--	--	--
Months Supply of Inventory	8.1	5.3	- 34.5%	--	--	--

\* Does not account for seller concessions. | Activity for one month can sometimes look extreme due to small sample size.

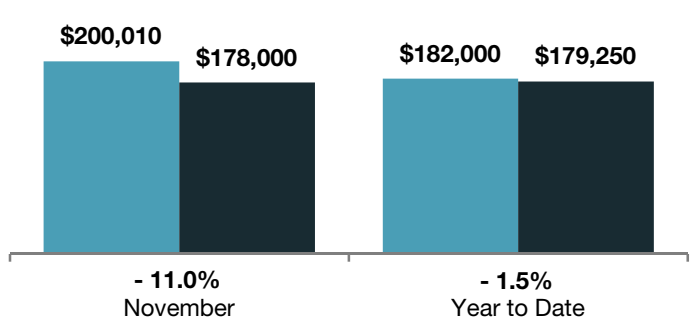
### Closed Sales

■ 2010 ■ 2011



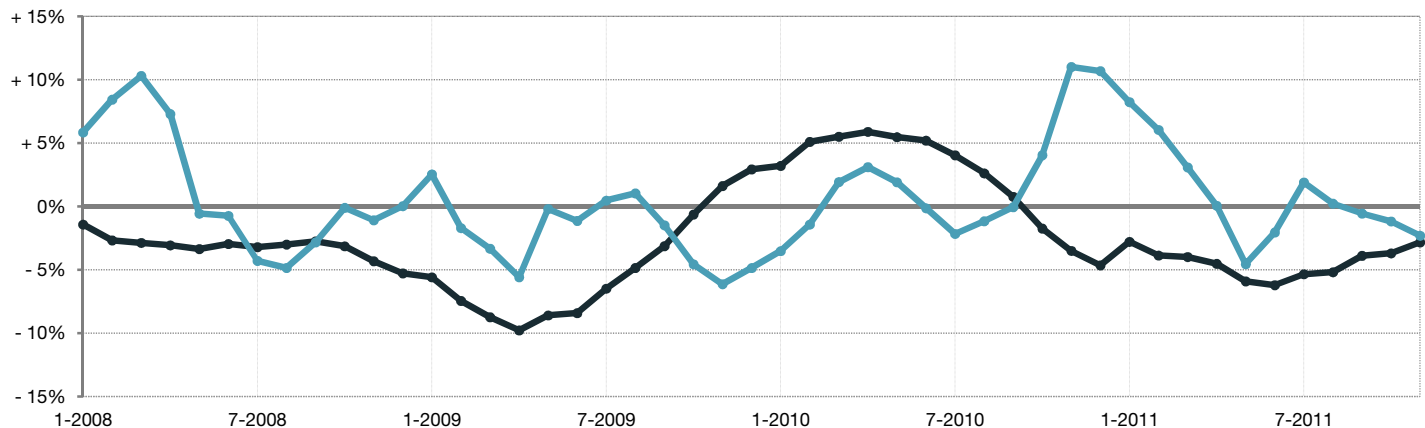
### Median Sales Price

■ 2010 ■ 2011



### Change in Median Sales Price from Prior Year (6-Month Average)\*\*

All MLS —●—  
Worthington City School District —●—



\*\* Each dot represents the change in median sales price from the prior year using a 6-month weighted average. This means that each of the 6 months used in a dot are proportioned according to their share of sales during that period. | All data comes from the Columbus Board of REALTORS® Multiple Listing Service (MLS). | Powered by 10K Research and Marketing. | Page 1 of 2

# Local Market Update – November 2011

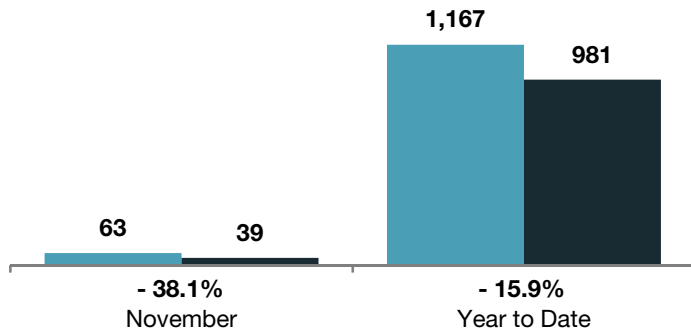
A RESEARCH TOOL PROVIDED BY THE COLUMBUS BOARD OF REALTORS®  
 BASED ON RESIDENTIAL LISTING DATA ONLY

## Worthington City School District

Franklin County

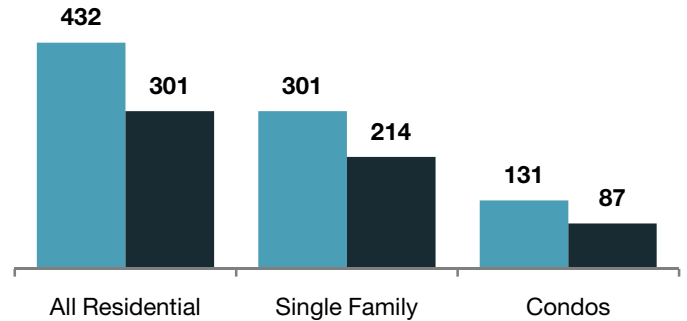
### New Listings

■ 2010 ■ 2011



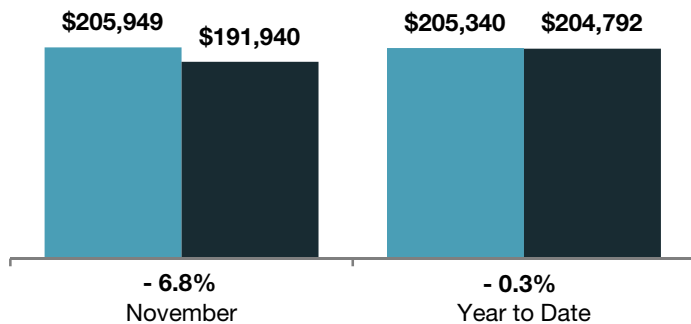
### Inventory of Homes for Sale

■ 2010 ■ 2011



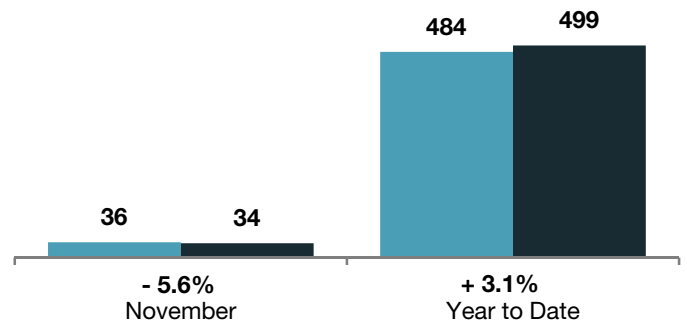
### Average Sales Price

■ 2010 ■ 2011



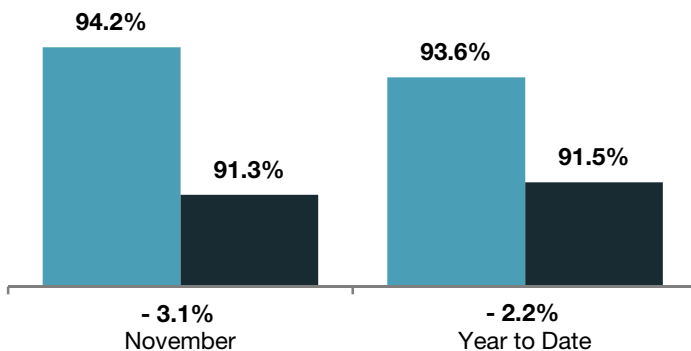
### Single Family Sales

■ 2010 ■ 2011



### Pct. of Orig. List Price Received

■ 2010 ■ 2011



### Condo Sales

■ 2010 ■ 2011

