

# Local Market Update – September 2012

A RESEARCH TOOL PROVIDED BY THE COLUMBUS BOARD OF REALTORS®  
BASED ON RESIDENTIAL LISTING DATA ONLY



THE COLUMBUS  
BOARD OF REALTORS®  
[www.ColumbusRealtors.com](http://www.ColumbusRealtors.com)

## Champaign County

### September

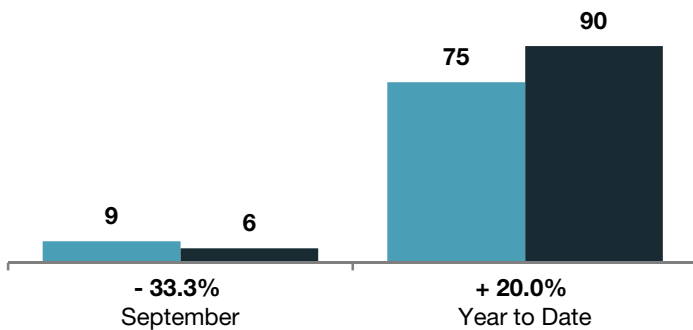
### Year to Date

	2011	2012	+ / -	2011	2012	+ / -
Closed Sales	9	6	- 33.3%	75	90	+ 20.0%
In Contracts	8	14	+ 75.0%	76	108	+ 42.1%
Average Sales Price*	\$137,722	\$137,561	- 0.1%	\$102,021	\$139,711	+ 36.9%
Median Sales Price*	\$114,000	\$122,950	+ 7.9%	\$86,000	\$115,900	+ 34.8%
Average Price per Square Foot*	\$81.45	\$71.07	- 12.7%	\$60.35	\$72.73	+ 20.5%
Percent of Original List Price Received*	89.7%	80.5%	- 10.2%	87.5%	88.4%	+ 1.0%
Percent of Last List Price Received*	97.3%	94.3%	- 3.2%	95.6%	93.9%	- 1.7%
Days on Market Until Sale	192	184	- 4.1%	127	161	+ 26.4%
New Listings	19	18	- 5.3%	189	191	+ 1.1%
Median List Price of New Listings	\$119,900	\$138,400	+ 15.4%	\$109,900	\$129,900	+ 18.2%
Median List Price at Time of Sale	\$115,900	\$127,400	+ 9.9%	\$89,900	\$122,000	+ 35.7%
Inventory of Homes for Sale	170	94	- 44.7%	--	--	--
Months Supply of Inventory	21.0	8.7	- 58.7%	--	--	--

\* Does not account for seller concessions. | Activity for one month can sometimes look extreme due to small sample size.

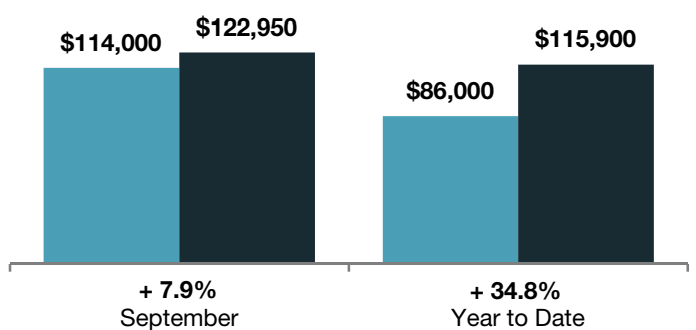
### Closed Sales

■ 2011 ■ 2012



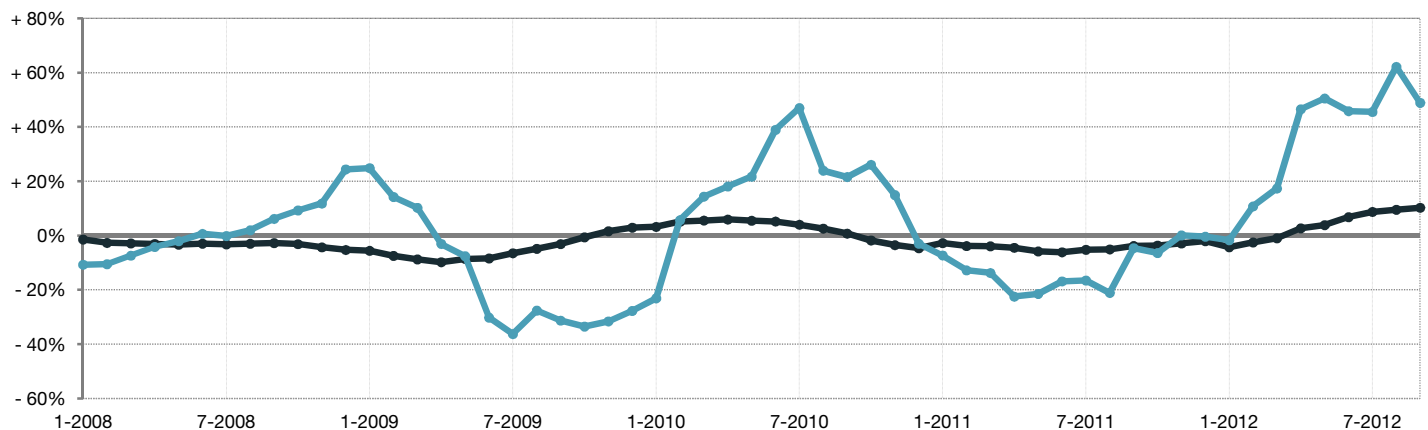
### Median Sales Price

■ 2011 ■ 2012



### Change in Median Sales Price from Prior Year (6-Month Average)\*\*

All MLS —●—  
Champaign County —●—



\*\* Each dot represents the change in median sales price from the prior year using a 6-month weighted average. This means that each of the 6 months used in a dot are proportioned according to their share of sales during that period. | All data comes from the Columbus Board of REALTORS® Multiple Listing Service (MLS). | Powered by 10K Research and Marketing. | Page 1 of 2

# Local Market Update – September 2012

A RESEARCH TOOL PROVIDED BY THE COLUMBUS BOARD OF REALTORS®  
 BASED ON RESIDENTIAL LISTING DATA ONLY

## Champaign County

