

# Local Market Update – December 2012

A RESEARCH TOOL PROVIDED BY THE COLUMBUS BOARD OF REALTORS®  
BASED ON RESIDENTIAL LISTING DATA ONLY



THE COLUMBUS  
BOARD OF REALTORS®  
[www.ColumbusRealtors.com](http://www.ColumbusRealtors.com)

## Fayette County

### December

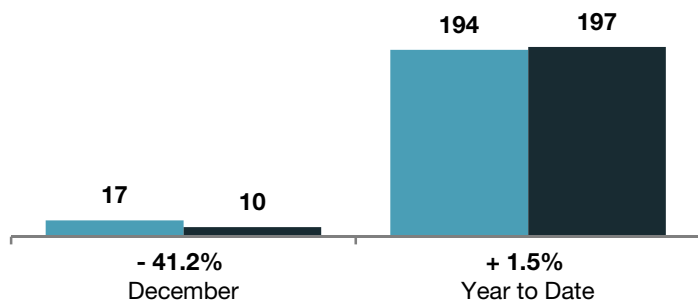
### Year to Date

	2011	2012	+ / -	2011	2012	+ / -
Closed Sales	17	10	- 41.2%	194	197	+ 1.5%
In Contracts	--	16	--	--	207	--
Average Sales Price	\$74,358	<b>\$75,588</b>	+ 1.7%	\$74,864	<b>\$94,265</b>	+ 25.9%
Median Sales Price**	\$58,500	<b>\$50,750</b>	- 13.2%	\$62,500	<b>\$74,500</b>	+ 19.2%
Average Price per Square Foot**	\$52.72	<b>\$46.74</b>	- 11.3%	\$46.82	<b>\$52.49</b>	+ 12.1%
Percent of Original List Price Received**	86.9%	<b>92.6%</b>	+ 6.5%	87.6%	<b>90.3%</b>	+ 3.0%
Percent of Last List Price Received**	93.2%	<b>93.3%</b>	+ 0.0%	92.7%	<b>94.4%</b>	+ 1.9%
Days on Market Until Sale	124	<b>53</b>	- 57.5%	96	<b>80</b>	- 16.7%
New Listings	10	<b>19</b>	+ 90.0%	344	<b>378</b>	+ 9.9%
Median List Price of New Listings	\$83,200	<b>\$64,900</b>	- 22.0%	\$84,200	<b>\$79,950</b>	- 5.0%
Median List Price at Time of Sale	\$59,900	<b>\$55,825</b>	- 6.8%	\$69,900	<b>\$77,900</b>	+ 11.4%
Inventory of Homes for Sale	--	<b>143</b>	--	--	--	--
Months Supply of Inventory	--	<b>8.4</b>	--	--	--	--

\*\* Does not account for seller concessions.

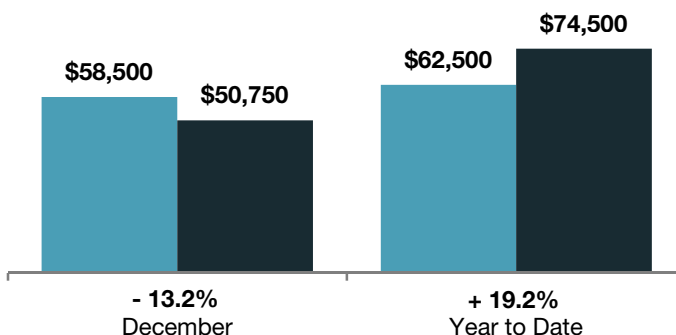
### Closed Sales

■ 2011 ■ 2012



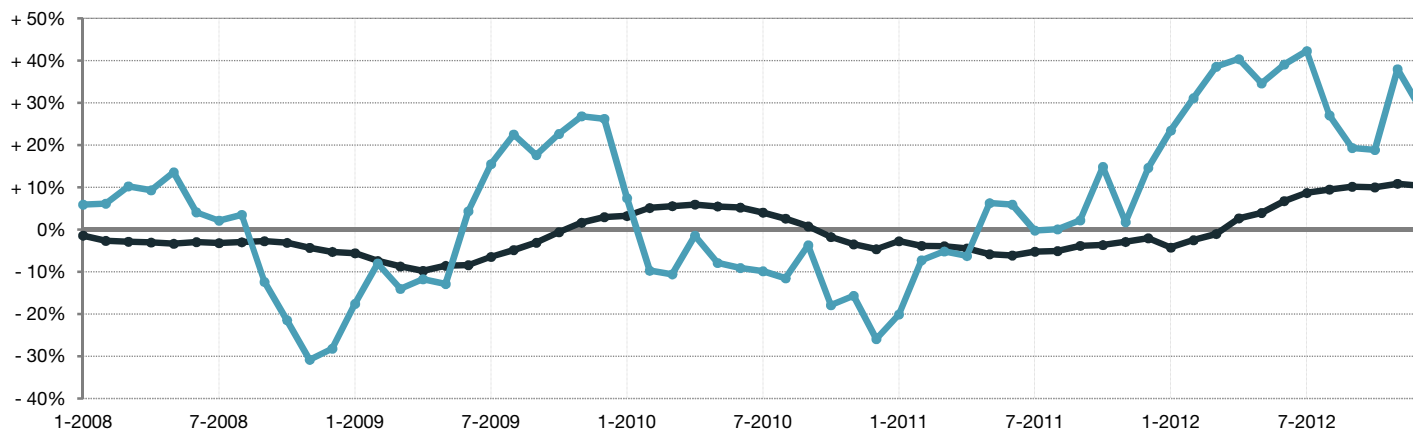
### Median Sales Price

■ 2011 ■ 2012



### Change in Median Sales Price from Prior Year (6-Month Average)†

All MLS —●—  
Fayette County —●—



† Each dot represents the change in median sales price from the prior year using a 6-month weighted average. This means that each of the 6 months used in a dot are proportioned according to their share of sales during that period. | Current as of January 12, 2013. All data from Columbus Board of REALTORS® Multiple Listing Service (MLS). | Powered by 10K Research and Marketing. | Page 1 of 2

# Local Market Update – December 2012

A RESEARCH TOOL PROVIDED BY THE COLUMBUS BOARD OF REALTORS®  
 BASED ON RESIDENTIAL LISTING DATA ONLY

## Fayette County

