

Local Market Update – December 2012

A RESEARCH TOOL PROVIDED BY THE COLUMBUS BOARD OF REALTORS®
BASED ON RESIDENTIAL LISTING DATA ONLY



THE COLUMBUS
BOARD OF REALTORS®
www.ColumbusRealtors.com

Licking County

December

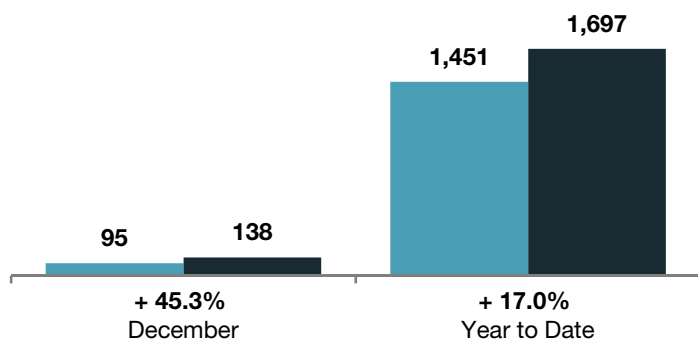
Year to Date

	2011	2012	+ / -	2011	2012	+ / -
Closed Sales	95	138	+ 45.3%	1,451	1,697	+ 17.0%
In Contracts	--	122	--	--	1,823	--
Average Sales Price	\$134,717	\$130,283	- 3.3%	\$137,415	\$144,786	+ 5.4%
Median Sales Price**	\$112,900	\$120,500	+ 6.7%	\$122,500	\$126,400	+ 3.2%
Average Price per Square Foot**	\$74.04	\$70.68	- 4.5%	\$73.92	\$77.62	+ 5.0%
Percent of Original List Price Received**	89.9%	91.1%	+ 1.4%	90.1%	91.2%	+ 1.2%
Percent of Last List Price Received**	94.4%	95.2%	+ 0.9%	94.8%	95.0%	+ 0.3%
Days on Market Until Sale	93	74	- 20.7%	95	96	+ 1.5%
New Listings	121	115	- 5.0%	2,762	2,744	- 0.7%
Median List Price of New Listings	\$118,900	\$125,000	+ 5.1%	\$138,894	\$139,500	+ 0.4%
Median List Price at Time of Sale	\$119,000	\$125,900	+ 5.8%	\$128,694	\$131,800	+ 2.4%
Inventory of Homes for Sale	--	835	--	--	--	--
Months Supply of Inventory	--	6.1	--	--	--	--

** Does not account for seller concessions.

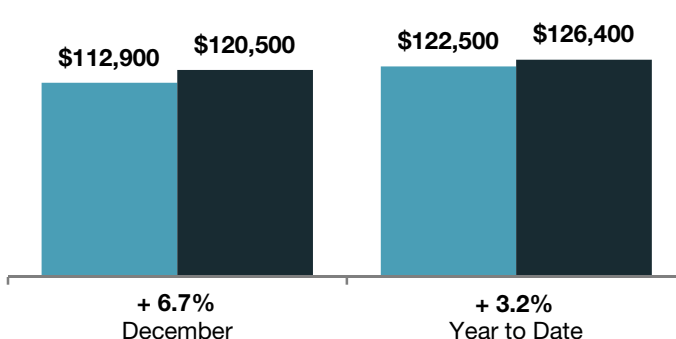
Closed Sales

■ 2011 ■ 2012



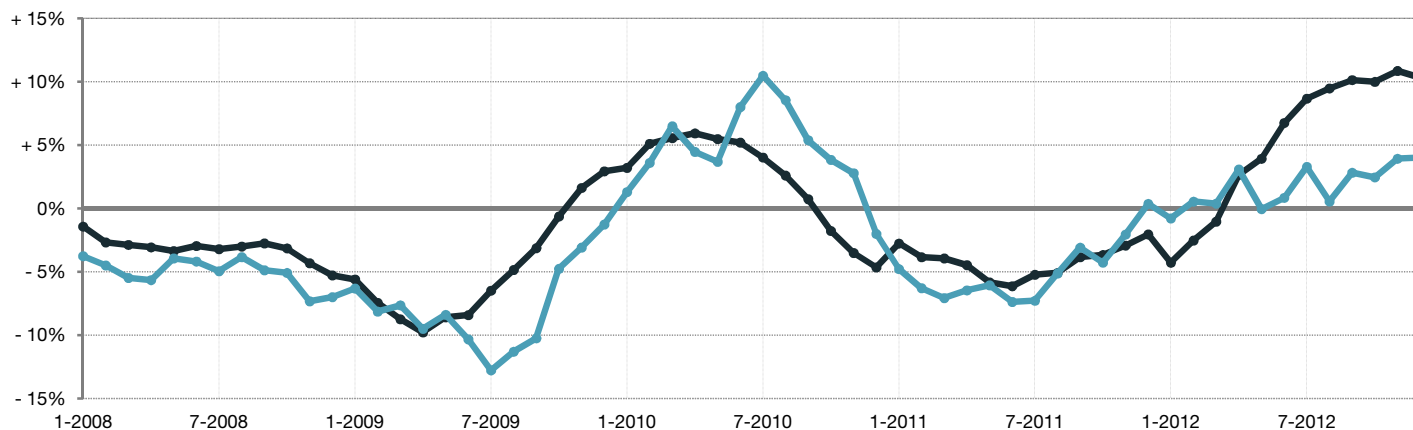
Median Sales Price

■ 2011 ■ 2012



Change in Median Sales Price from Prior Year (6-Month Average)†

All MLS —●—
Licking County —●—



† Each dot represents the change in median sales price from the prior year using a 6-month weighted average. This means that each of the 6 months used in a dot are proportioned according to their share of sales during that period. | Current as of January 12, 2013. All data from Columbus Board of REALTORS® Multiple Listing Service (MLS). | Powered by 10K Research and Marketing. | Page 1 of 2

Local Market Update – December 2012

A RESEARCH TOOL PROVIDED BY THE COLUMBUS BOARD OF REALTORS®
BASED ON RESIDENTIAL LISTING DATA ONLY

Licking County

