

Local Market Update – December 2012

A RESEARCH TOOL PROVIDED BY THE COLUMBUS BOARD OF REALTORS®
BASED ON RESIDENTIAL LISTING DATA ONLY



THE COLUMBUS
BOARD OF REALTORS®
www.ColumbusRealtors.com

Logan County

December

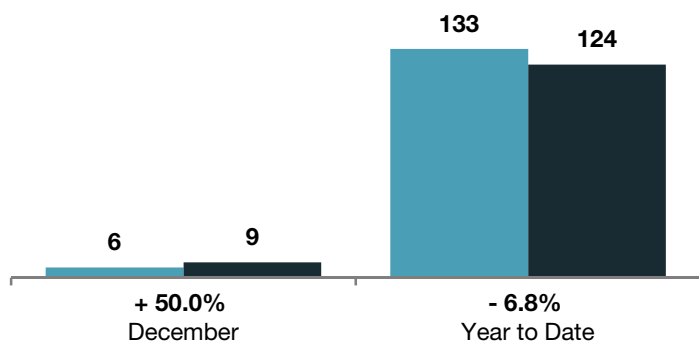
Year to Date

	2011	2012	+ / -	2011	2012	+ / -
Closed Sales	6	9	+ 50.0%	133	124	- 6.8%
In Contracts	--	5	--	--	128	--
Average Sales Price	\$63,084	\$133,478	+ 111.6%	\$133,420	\$135,143	+ 1.3%
Median Sales Price**	\$43,753	\$142,900	+ 226.6%	\$104,000	\$120,450	+ 15.8%
Average Price per Square Foot**	\$45.31	\$79.24	+ 74.9%	\$81.51	\$85.51	+ 4.9%
Percent of Original List Price Received**	88.5%	85.6%	- 3.3%	88.6%	89.9%	+ 1.5%
Percent of Last List Price Received**	92.3%	96.9%	+ 5.0%	93.9%	94.3%	+ 0.4%
Days on Market Until Sale	156	174	+ 11.9%	152	125	- 17.5%
New Listings	6	11	+ 83.3%	249	260	+ 4.4%
Median List Price of New Listings	\$119,900	\$99,900	- 16.7%	\$124,900	\$119,900	- 4.0%
Median List Price at Time of Sale	\$49,950	\$145,000	+ 190.3%	\$110,000	\$125,000	+ 13.6%
Inventory of Homes for Sale	--	94	--	--	--	--
Months Supply of Inventory	--	9.3	--	--	--	--

** Does not account for seller concessions.

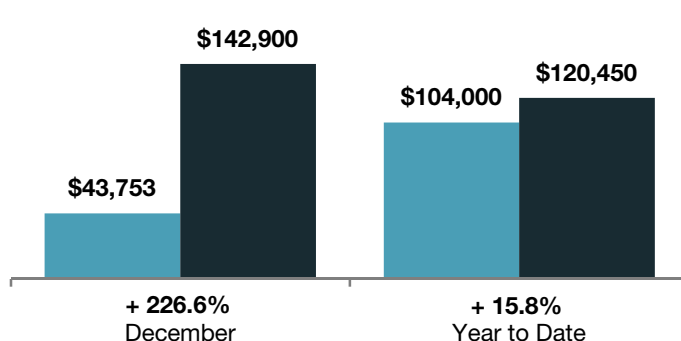
Closed Sales

■ 2011 ■ 2012



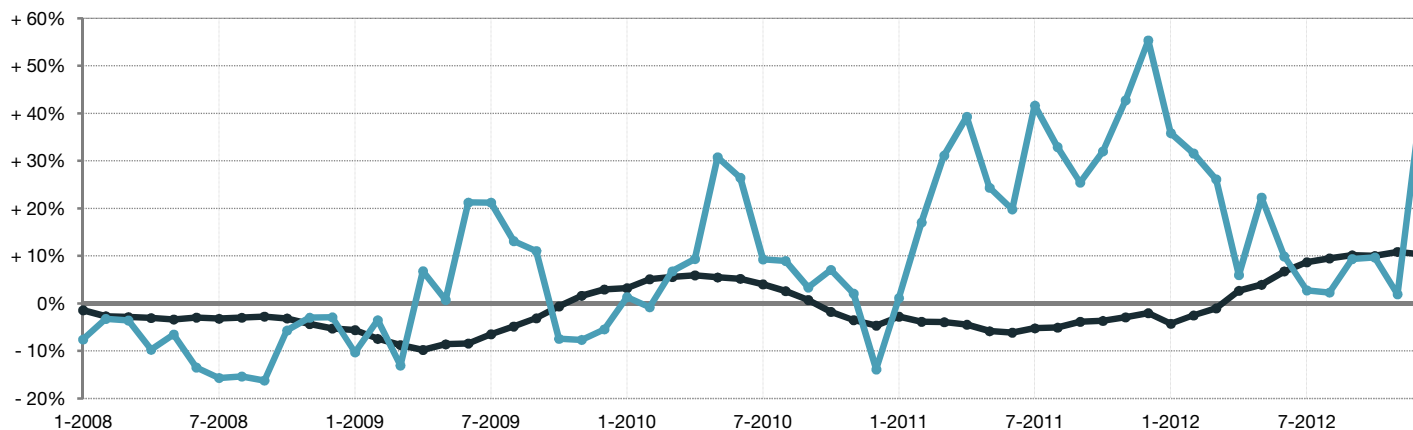
Median Sales Price

■ 2011 ■ 2012



Change in Median Sales Price from Prior Year (6-Month Average)†

All MLS —●—
Logan County —●—



† Each dot represents the change in median sales price from the prior year using a 6-month weighted average. This means that each of the 6 months used in a dot are proportioned according to their share of sales during that period. | Current as of January 12, 2013. All data from Columbus Board of REALTORS® Multiple Listing Service (MLS). | Powered by 10K Research and Marketing. | Page 1 of 2

Local Market Update – December 2012

A RESEARCH TOOL PROVIDED BY THE COLUMBUS BOARD OF REALTORS®
 BASED ON RESIDENTIAL LISTING DATA ONLY

Logan County

