

# Local Market Update – January 2013

A RESEARCH TOOL PROVIDED BY THE COLUMBUS BOARD OF REALTORS®  
BASED ON RESIDENTIAL LISTING DATA ONLY

## Fayette County

### January

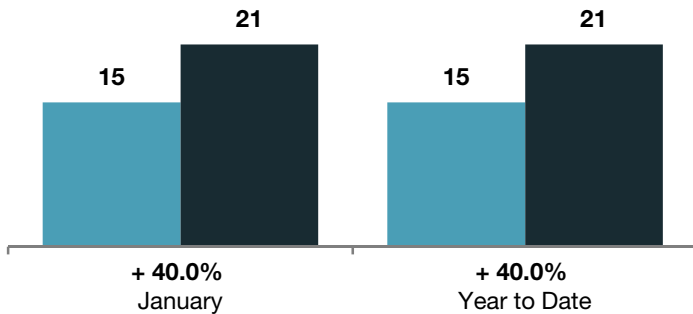
### Year to Date

	2012	2013	+ / -	2012	2013	+ / -
Closed Sales	15	21	+ 40.0%	15	21	+ 40.0%
In Contracts	--	24	--	--	24	--
Average Sales Price	\$64,859	<b>\$90,083</b>	+ 38.9%	\$64,859	<b>\$90,083</b>	+ 38.9%
Median Sales Price**	\$73,500	<b>\$47,500</b>	- 35.4%	\$73,500	<b>\$47,500</b>	- 35.4%
Average Price per Square Foot**	\$42.10	<b>\$48.43</b>	+ 15.0%	\$42.10	<b>\$48.43</b>	+ 15.0%
Percent of Original List Price Received**	87.0%	<b>85.2%</b>	- 2.1%	87.0%	<b>85.2%</b>	- 2.1%
Percent of Last List Price Received**	91.1%	<b>89.3%</b>	- 2.0%	91.1%	<b>89.3%</b>	- 2.0%
Days on Market Until Sale	96	<b>70</b>	- 26.8%	96	<b>70</b>	- 26.8%
New Listings	32	<b>24</b>	- 25.0%	32	<b>24</b>	- 25.0%
Median List Price of New Listings	\$79,900	<b>\$106,450</b>	+ 33.2%	\$79,900	<b>\$106,450</b>	+ 33.2%
Median List Price at Time of Sale	\$73,900	<b>\$55,000</b>	- 25.6%	\$73,900	<b>\$55,000</b>	- 25.6%
Inventory of Homes for Sale	--	<b>129</b>	--	--	--	--
Months Supply of Inventory	--	<b>7.8</b>	--	--	--	--

\*\* Does not account for seller concessions.

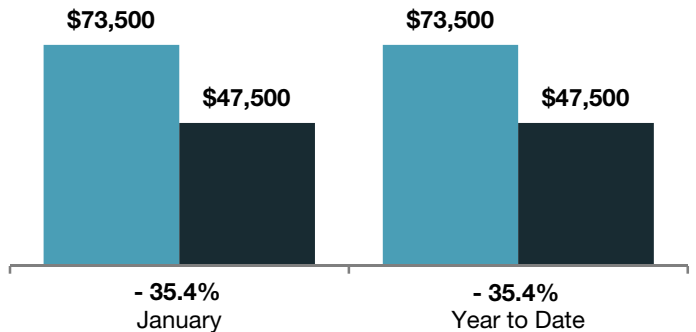
### Closed Sales

■ 2012 ■ 2013



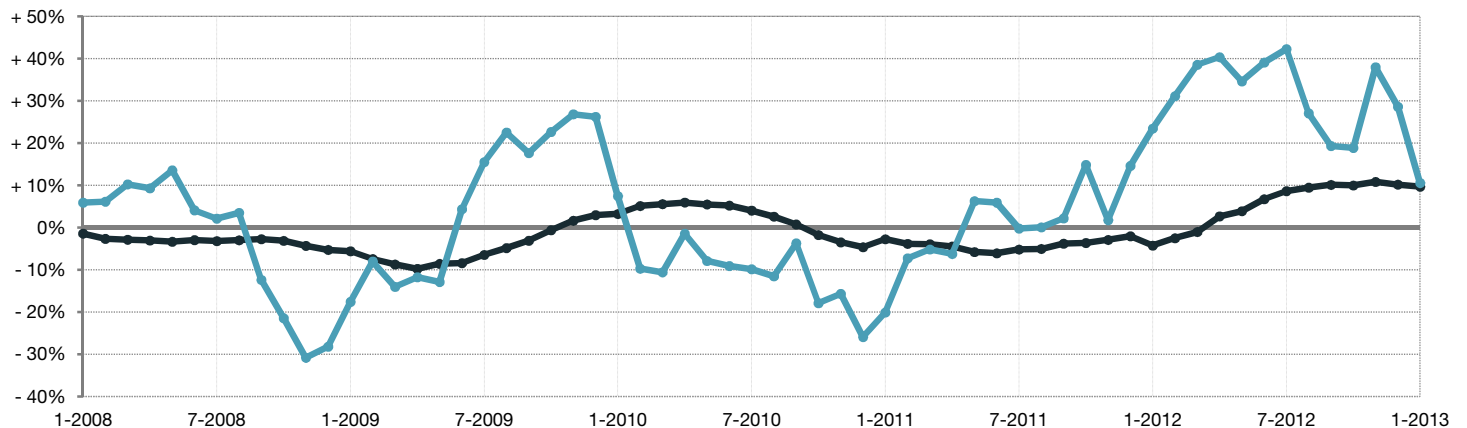
### Median Sales Price

■ 2012 ■ 2013



### Change in Median Sales Price from Prior Year (6-Month Average)†

All MLS —●—  
Fayette County —●—



† Each dot represents the change in median sales price from the prior year using a 6-month weighted average. This means that each of the 6 months used in a dot are proportioned according to their share of sales during that period. | Current as of February 12, 2013. All data from Columbus Board of REALTORS® Multiple Listing Service (MLS). | Powered by 10K Research and Marketing. | Page 1 of 2

# Local Market Update – January 2013

A RESEARCH TOOL PROVIDED BY THE COLUMBUS BOARD OF REALTORS®  
 BASED ON RESIDENTIAL LISTING DATA ONLY

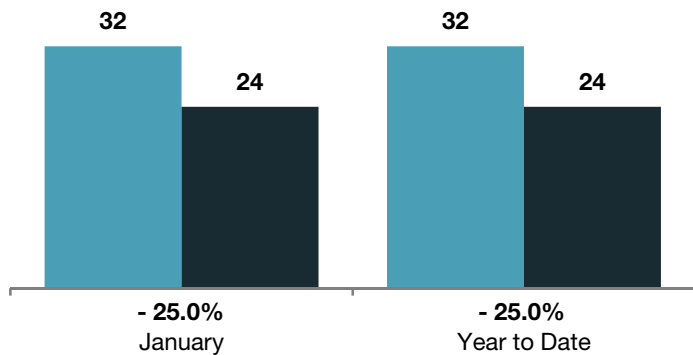


THE COLUMBUS  
 BOARD OF REALTORS®  
[www.ColumbusRealtors.com](http://www.ColumbusRealtors.com)

## Fayette County

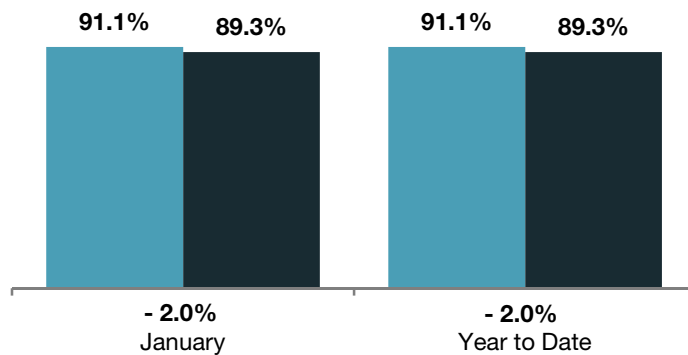
### New Listings

■ 2012 ■ 2013



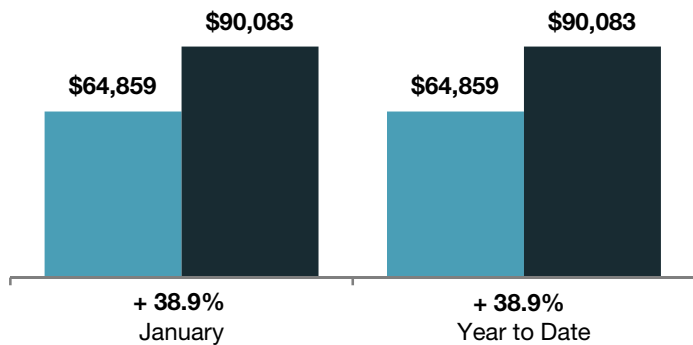
### Pct of Last List Price Received

■ 2012 ■ 2013



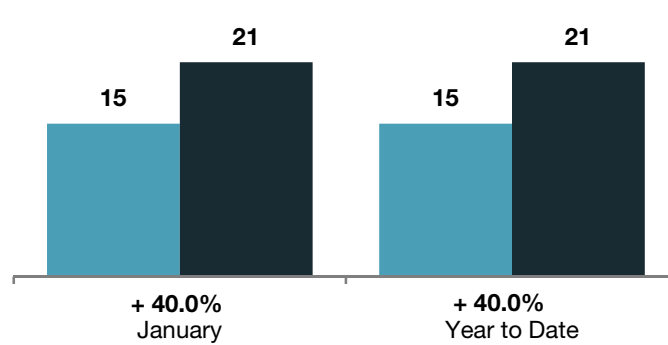
### Average Sales Price

■ 2012 ■ 2013



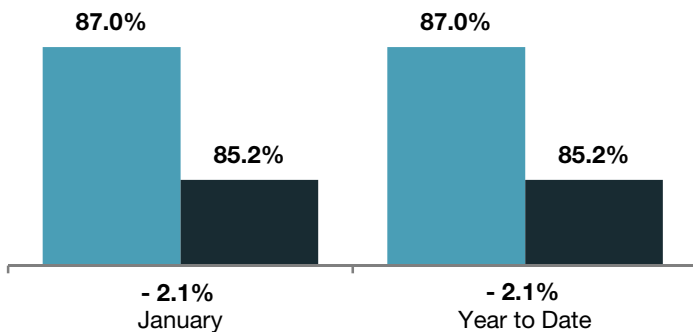
### Single Family Sales

■ 2012 ■ 2013



### Pct. of Orig. List Price Received

■ 2012 ■ 2013



### Condo Sales

■ 2012 ■ 2013

