

Local Market Update – February 2013

A RESEARCH TOOL PROVIDED BY THE COLUMBUS BOARD OF REALTORS®
BASED ON RESIDENTIAL LISTING DATA ONLY



THE COLUMBUS
BOARD OF REALTORS®
www.ColumbusRealtors.com

Champaign County

February

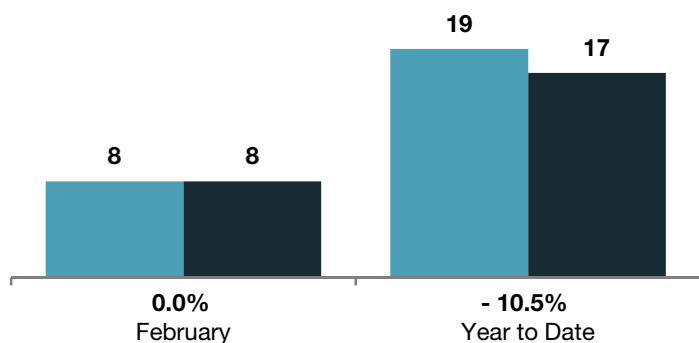
Year to Date

| | 2012 | 2013 | + / - | 2012 | 2013 | + / - |
|---|-----------|------------------|---------|-----------|------------------|---------|
| Closed Sales | 8 | 8 | 0.0% | 19 | 17 | - 10.5% |
| In Contracts | -- | 8 | -- | -- | 18 | -- |
| Average Sales Price | \$89,913 | \$106,100 | + 18.0% | \$153,329 | \$129,403 | - 15.6% |
| Median Sales Price** | \$96,950 | \$86,000 | - 11.3% | \$117,000 | \$113,000 | - 3.4% |
| Average Price per Square Foot** | \$66.86 | \$56.94 | - 14.9% | \$73.93 | \$72.73 | - 1.4% |
| Percent of Original List Price Received** | 87.1% | 91.3% | + 4.8% | 86.5% | 89.6% | + 3.6% |
| Percent of Last List Price Received** | 90.0% | 94.8% | + 5.3% | 92.1% | 95.7% | + 3.9% |
| Days on Market Until Sale | 189 | 110 | - 41.8% | 227 | 145 | - 36.1% |
| New Listings | 20 | 10 | - 50.0% | 36 | 30 | - 16.7% |
| Median List Price of New Listings | \$121,650 | \$132,700 | + 9.1% | \$128,700 | \$132,400 | + 2.9% |
| Median List Price at Time of Sale | \$103,900 | \$87,900 | - 15.4% | \$129,900 | \$114,900 | - 11.5% |
| Inventory of Homes for Sale | -- | 78 | -- | -- | -- | -- |
| Months Supply of Inventory | -- | 7.6 | -- | -- | -- | -- |

** Does not account for seller concessions.

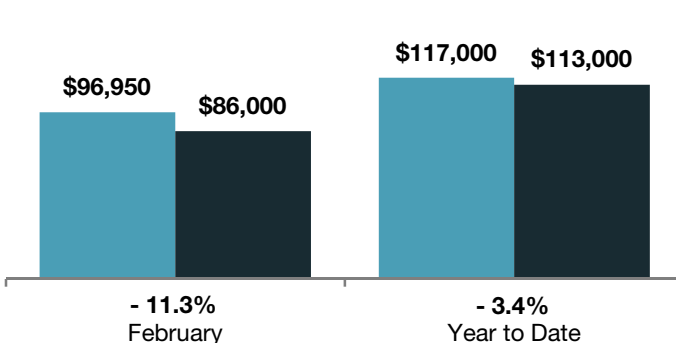
Closed Sales

■ 2012 ■ 2013



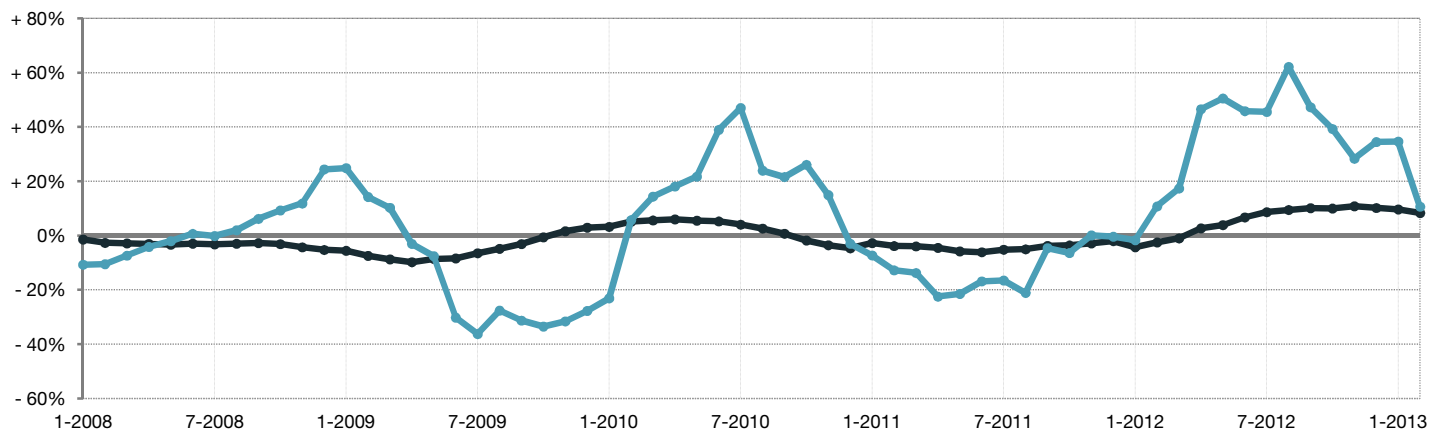
Median Sales Price

■ 2012 ■ 2013



Change in Median Sales Price from Prior Year (6-Month Average)†

All MLS —●—
Champaign County —●—



† Each dot represents the change in median sales price from the prior year using a 6-month weighted average. This means that each of the 6 months used in a dot are proportioned according to their share of sales during that period. | Current as of March 12, 2013. All data from Columbus Board of REALTORS® Multiple Listing Service (MLS). | Powered by 10K Research and Marketing. | Page 1 of 2

Local Market Update – February 2013

A RESEARCH TOOL PROVIDED BY THE COLUMBUS BOARD OF REALTORS®
 BASED ON RESIDENTIAL LISTING DATA ONLY

Champaign County

