

Local Market Update – April 2013

A RESEARCH TOOL PROVIDED BY THE COLUMBUS BOARD OF REALTORS®
BASED ON RESIDENTIAL LISTING DATA ONLY

Johnstown-Monroe Local School District

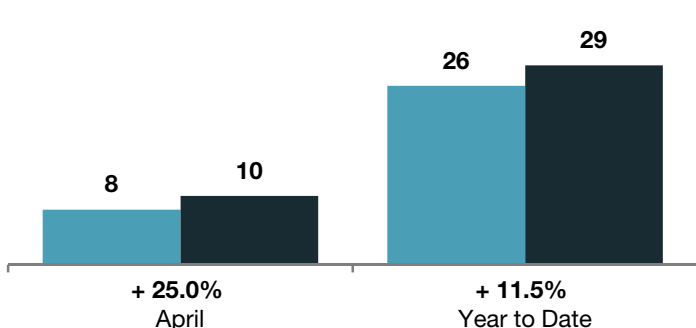
Delaware and Licking Counties

	April			Year to Date		
	2012	2013	+ / -	2012	2013	+ / -
Closed Sales	8	10	+ 25.0%	26	29	+ 11.5%
In Contracts	--	14	--	--	38	--
Average Sales Price	\$149,801	\$186,441	+ 24.5%	\$152,331	\$192,981	+ 26.7%
Median Sales Price**	\$144,000	\$181,000	+ 25.7%	\$134,550	\$183,750	+ 36.6%
Average Price per Square Foot**	\$93.36	\$91.72	- 1.1%	\$82.82	\$90.41	+ 8.4%
Percent of Original List Price Received**	94.5%	94.4%	- 0.1%	91.7%	92.8%	+ 1.2%
Percent of Last List Price Received**	95.6%	98.2%	+ 2.7%	95.4%	97.4%	+ 2.1%
Days on Market Until Sale	50	65	+ 30.0%	82	89	+ 8.5%
New Listings	17	13	- 23.5%	53	37	- 30.2%
Median List Price of New Listings	\$159,900	\$235,000	+ 47.0%	\$169,900	\$179,900	+ 5.9%
Median List Price at Time of Sale	\$148,400	\$178,950	+ 20.6%	\$142,450	\$179,950	+ 26.3%
Inventory of Homes for Sale	--	30	--	--	--	--
Months Supply of Inventory	--	3.2	--	--	--	--

** Does not account for seller concessions.

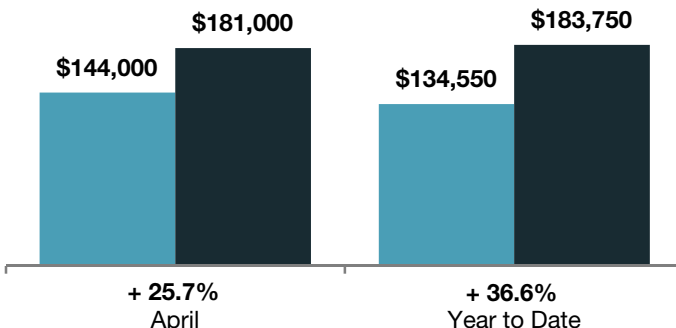
Closed Sales

■ 2012 ■ 2013



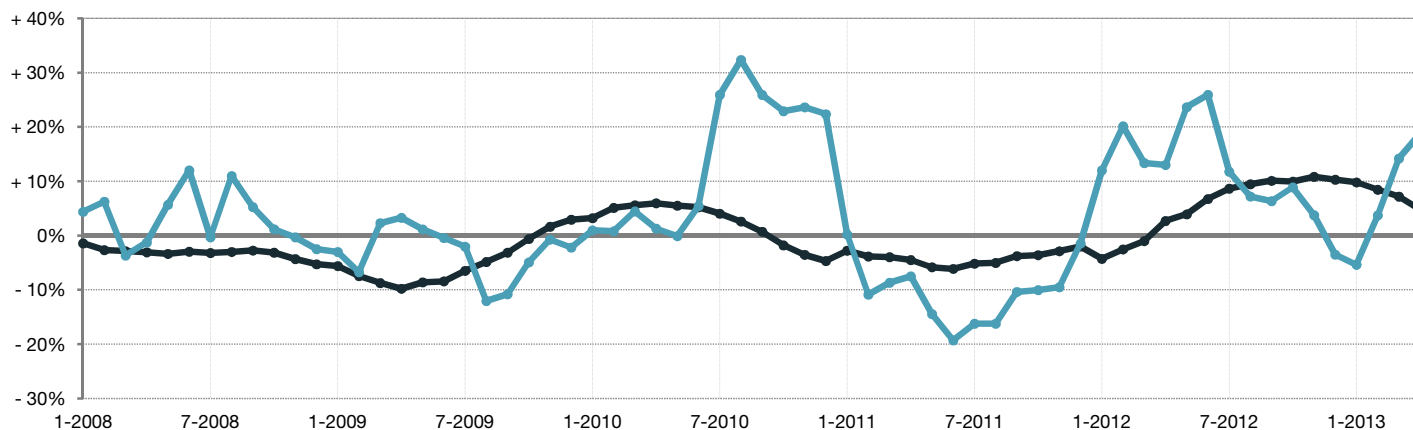
Median Sales Price

■ 2012 ■ 2013



Change in Median Sales Price from Prior Year (6-Month Average)†

All MLS —●—
Johnstown-Monroe Local School District —●—



† Each dot represents the change in median sales price from the prior year using a 6-month weighted average. This means that each of the 6 months used in a dot are proportioned according to their share of sales during that period. | Current as of May 12, 2013. All data from Columbus Board of REALTORS® Multiple Listing Service (MLS). | Powered by 10K Research and Marketing. | Page 1 of 2

Local Market Update – April 2013

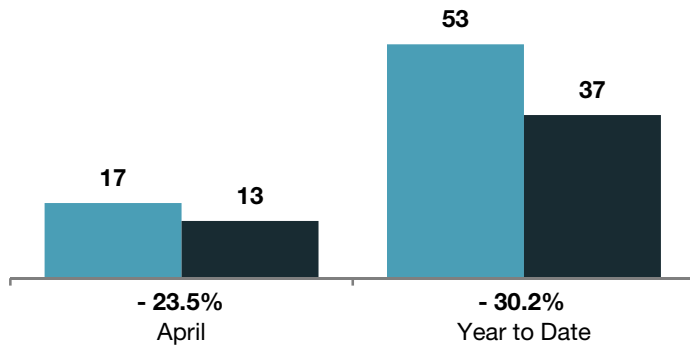
A RESEARCH TOOL PROVIDED BY THE COLUMBUS BOARD OF REALTORS®
 BASED ON RESIDENTIAL LISTING DATA ONLY

Johnstown-Monroe Local School District

Delaware and Licking Counties

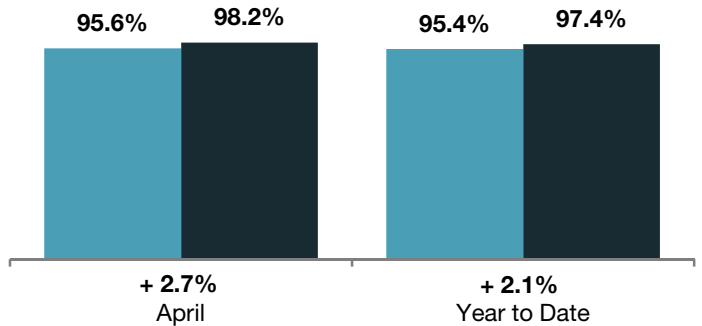
New Listings

■ 2012 ■ 2013



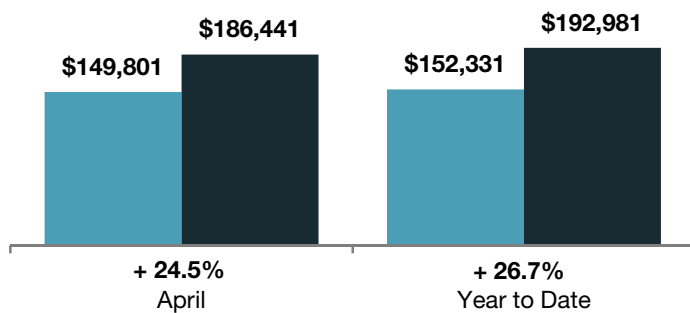
Pct of Last List Price Received

■ 2012 ■ 2013



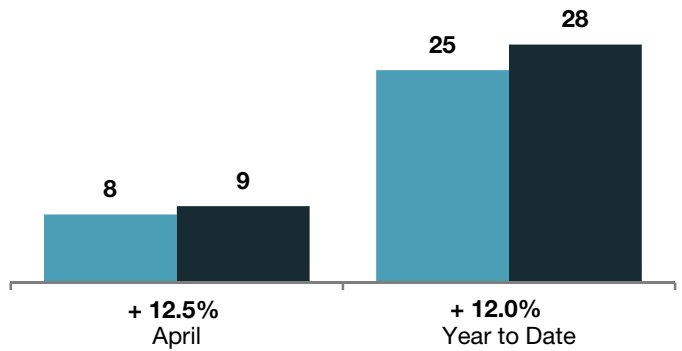
Average Sales Price

■ 2012 ■ 2013



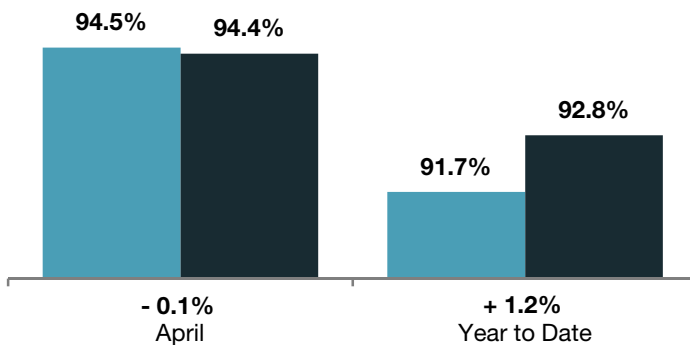
Single Family Sales

■ 2012 ■ 2013



Pct. of Orig. List Price Received

■ 2012 ■ 2013



Condo Sales

■ 2012 ■ 2013

