

Local Market Update – April 2013

A RESEARCH TOOL PROVIDED BY THE COLUMBUS BOARD OF REALTORS®
BASED ON RESIDENTIAL LISTING DATA ONLY



THE COLUMBUS
BOARD OF REALTORS®
www.ColumbusRealtors.com

London City School District

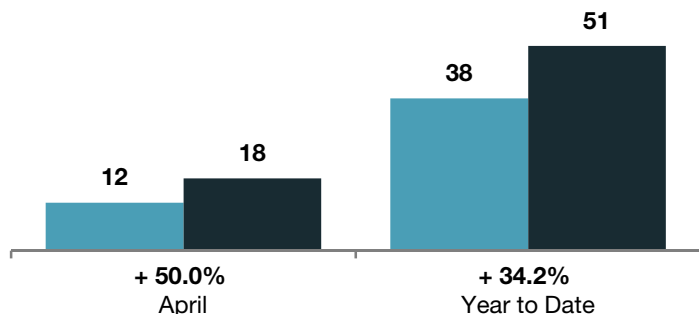
Madison County

	April			Year to Date		
	2012	2013	+ / -	2012	2013	+ / -
Closed Sales	12	18	+ 50.0%	38	51	+ 34.2%
In Contracts	--	24	--	--	65	--
Average Sales Price	\$108,373	\$98,100	- 9.5%	\$114,100	\$119,390	+ 4.6%
Median Sales Price**	\$113,450	\$113,500	+ 0.0%	\$114,450	\$112,000	- 2.1%
Average Price per Square Foot**	\$73.29	\$64.06	- 12.3%	\$70.52	\$68.66	- 2.8%
Percent of Original List Price Received**	91.7%	88.2%	- 3.8%	90.5%	89.4%	- 1.2%
Percent of Last List Price Received**	93.5%	93.3%	- 0.2%	95.2%	94.4%	- 0.8%
Days on Market Until Sale	131	131	0.0%	133	115	- 13.5%
New Listings	23	29	+ 26.1%	82	92	+ 12.2%
Median List Price of New Listings	\$123,000	\$159,000	+ 29.3%	\$122,000	\$147,200	+ 20.7%
Median List Price at Time of Sale	\$119,700	\$119,198	- 0.4%	\$112,250	\$119,895	+ 6.8%
Inventory of Homes for Sale	--	101	--	--	--	--
Months Supply of Inventory	--	8.7	--	--	--	--

** Does not account for seller concessions.

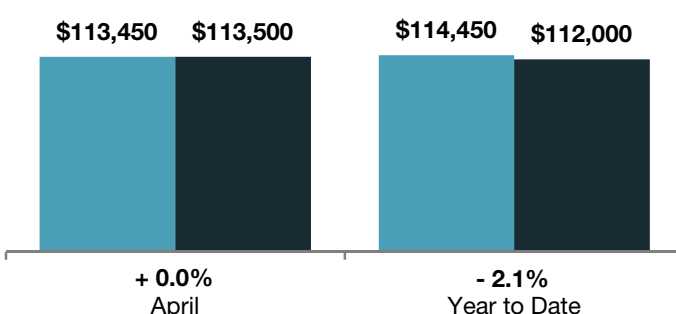
Closed Sales

■ 2012 ■ 2013



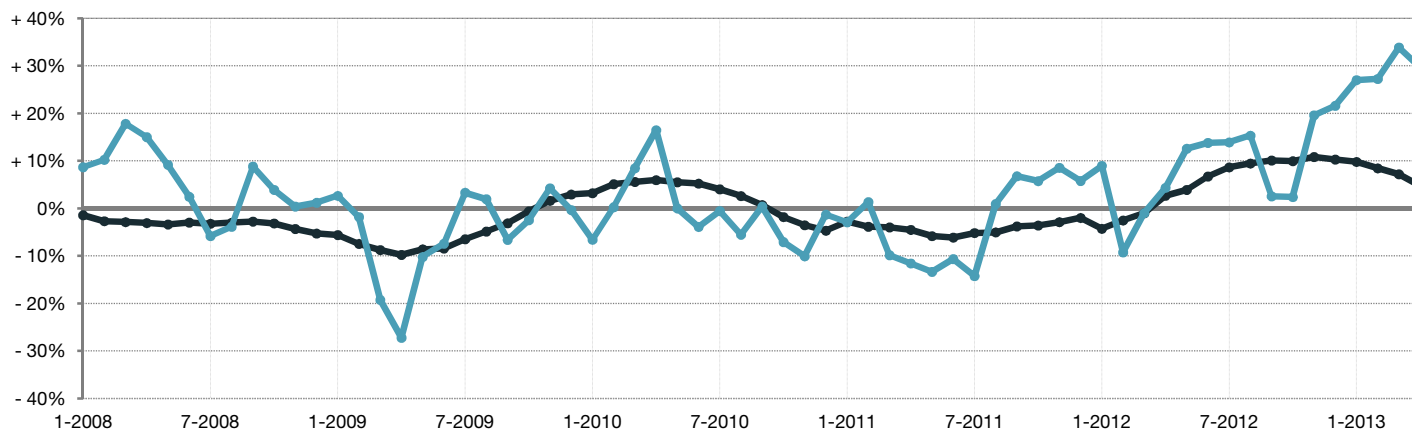
Median Sales Price

■ 2012 ■ 2013



Change in Median Sales Price from Prior Year (6-Month Average)†

All MLS — London City School District



† Each dot represents the change in median sales price from the prior year using a 6-month weighted average. This means that each of the 6 months used in a dot are proportioned according to their share of sales during that period. | Current as of May 12, 2013. All data from Columbus Board of REALTORS® Multiple Listing Service (MLS). | Powered by 10K Research and Marketing. | Page 1 of 2

Local Market Update – April 2013

A RESEARCH TOOL PROVIDED BY THE COLUMBUS BOARD OF REALTORS®
 BASED ON RESIDENTIAL LISTING DATA ONLY

London City School District

Madison County

