

Local Market Update – April 2013

A RESEARCH TOOL PROVIDED BY THE COLUMBUS BOARD OF REALTORS®
BASED ON RESIDENTIAL LISTING DATA ONLY

Marysville Exempted Village School District

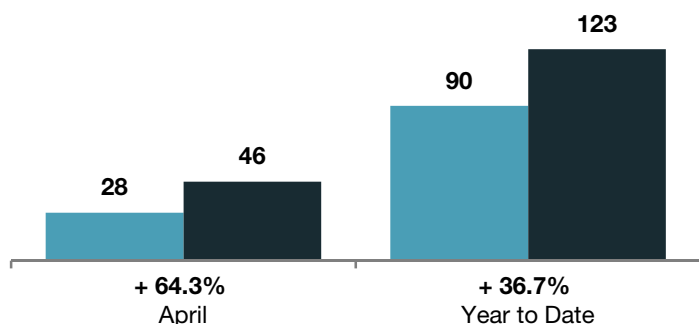
Union County

	April			Year to Date		
	2012	2013	+ / -	2012	2013	+ / -
Closed Sales	28	46	+ 64.3%	90	123	+ 36.7%
In Contracts	--	75	--	--	171	--
Average Sales Price	\$157,165	\$168,905	+ 7.5%	\$142,908	\$174,759	+ 22.3%
Median Sales Price**	\$152,500	\$161,750	+ 6.1%	\$144,450	\$163,500	+ 13.2%
Average Price per Square Foot**	\$81.73	\$87.48	+ 6.1%	\$75.90	\$85.24	+ 11.8%
Percent of Original List Price Received**	93.6%	95.1%	+ 1.6%	90.9%	94.0%	+ 3.4%
Percent of Last List Price Received**	97.3%	97.4%	+ 0.1%	96.1%	97.1%	+ 1.0%
Days on Market Until Sale	104	102	- 1.9%	117	87	- 25.6%
New Listings	53	67	+ 26.4%	212	189	- 10.8%
Median List Price of New Listings	\$169,000	\$169,000	0.0%	\$159,900	\$169,900	+ 6.3%
Median List Price at Time of Sale	\$154,950	\$163,900	+ 5.8%	\$148,900	\$164,548	+ 10.5%
Inventory of Homes for Sale	--	147	--	--	--	--
Months Supply of Inventory	--	4.6	--	--	--	--

** Does not account for seller concessions.

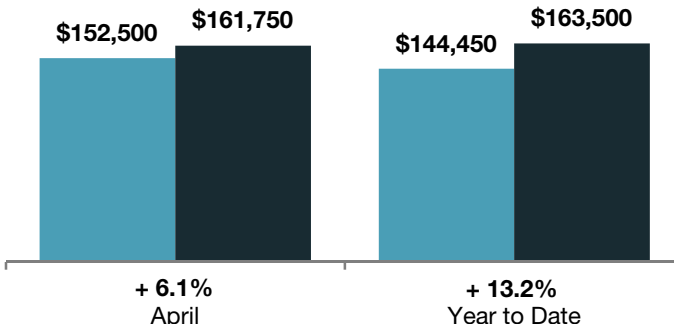
Closed Sales

■ 2012 ■ 2013



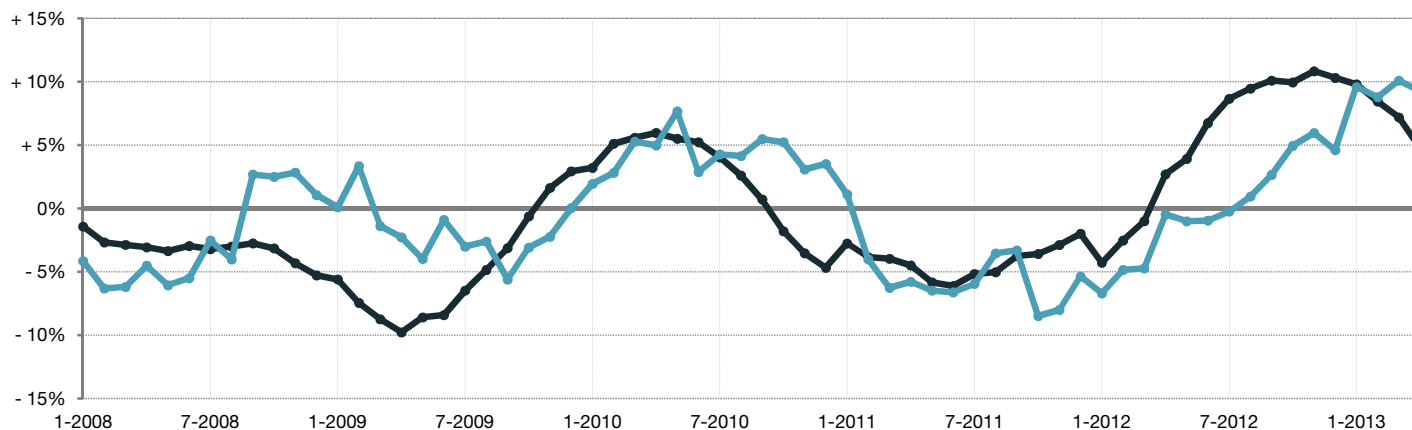
Median Sales Price

■ 2012 ■ 2013



Change in Median Sales Price from Prior Year (6-Month Average)†

All MLS —●—
Marysville Exempted Village School District —●—



† Each dot represents the change in median sales price from the prior year using a 6-month weighted average. This means that each of the 6 months used in a dot are proportioned according to their share of sales during that period. | Current as of May 12, 2013. All data from Columbus Board of REALTORS® Multiple Listing Service (MLS). | Powered by 10K Research and Marketing. | Page 1 of 2

Local Market Update – April 2013

A RESEARCH TOOL PROVIDED BY THE COLUMBUS BOARD OF REALTORS®
 BASED ON RESIDENTIAL LISTING DATA ONLY

Marysville Exempted Village School District

Union County

