

Local Market Update – April 2013

A RESEARCH TOOL PROVIDED BY THE COLUMBUS BOARD OF REALTORS®
BASED ON RESIDENTIAL LISTING DATA ONLY



THE COLUMBUS
BOARD OF REALTORS®
www.ColumbusRealtors.com

Newark City School District

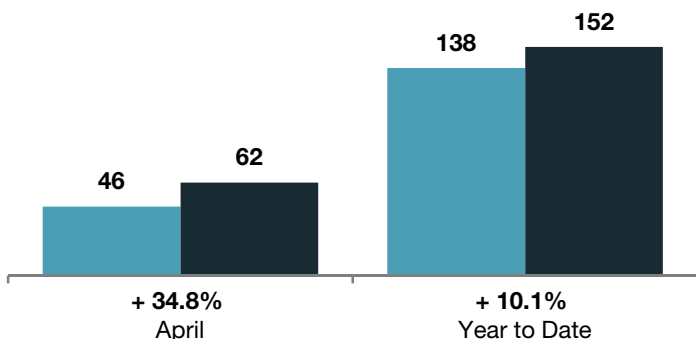
Licking County

	April			Year to Date		
	2012	2013	+ / -	2012	2013	+ / -
Closed Sales	46	62	+ 34.8%	138	152	+ 10.1%
In Contracts	--	58	--	--	187	--
Average Sales Price	\$100,056	\$86,540	- 13.5%	\$86,220	\$85,831	- 0.5%
Median Sales Price**	\$93,000	\$82,046	- 11.8%	\$77,450	\$80,850	+ 4.4%
Average Price per Square Foot**	\$66.47	\$62.96	- 4.5%	\$58.98	\$58.68	0.0%
Percent of Original List Price Received**	91.2%	88.5%	- 3.0%	87.6%	86.9%	- 0.8%
Percent of Last List Price Received**	94.8%	93.8%	- 1.1%	93.1%	92.5%	- 0.6%
Days on Market Until Sale	89	123	+ 38.2%	109	117	+ 7.3%
New Listings	85	102	+ 20.0%	282	297	+ 5.3%
Median List Price of New Listings	\$103,000	\$87,750	- 14.8%	\$94,800	\$90,000	- 5.1%
Median List Price at Time of Sale	\$99,900	\$85,400	- 14.5%	\$84,700	\$85,400	+ 0.8%
Inventory of Homes for Sale	--	300	--	--	--	--
Months Supply of Inventory	--	7.4	--	--	--	--

** Does not account for seller concessions.

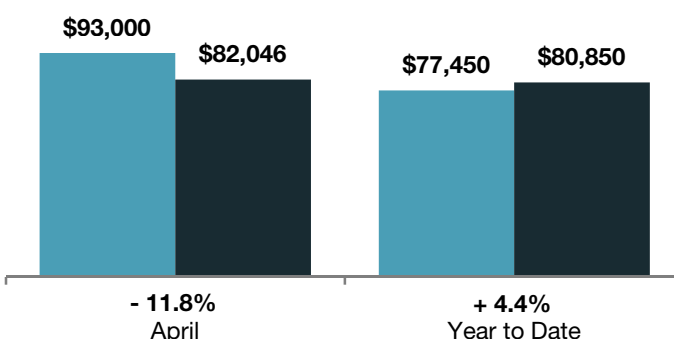
Closed Sales

■ 2012 ■ 2013

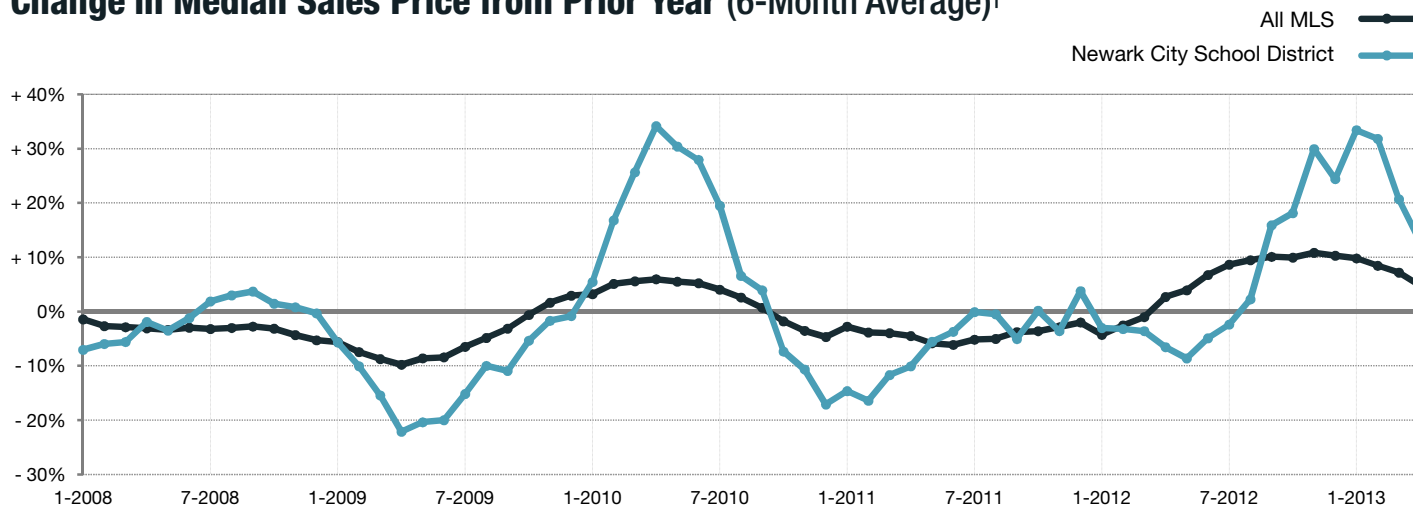


Median Sales Price

■ 2012 ■ 2013



Change in Median Sales Price from Prior Year (6-Month Average)†



† Each dot represents the change in median sales price from the prior year using a 6-month weighted average. This means that each of the 6 months used in a dot are proportioned according to their share of sales during that period. | Current as of May 12, 2013. All data from Columbus Board of REALTORS® Multiple Listing Service (MLS). | Powered by 10K Research and Marketing. | Page 1 of 2

Local Market Update – April 2013

A RESEARCH TOOL PROVIDED BY THE COLUMBUS BOARD OF REALTORS®
 BASED ON RESIDENTIAL LISTING DATA ONLY

Newark City School District

Licking County

