

Local Market Update – April 2013

A RESEARCH TOOL PROVIDED BY THE COLUMBUS BOARD OF REALTORS®
BASED ON RESIDENTIAL LISTING DATA ONLY

Powell (Corp.)

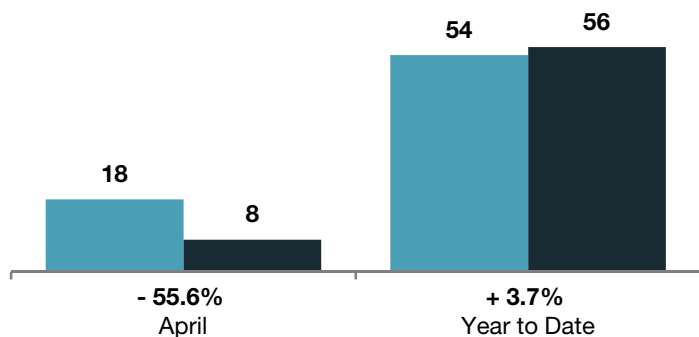
Delaware County

	April			Year to Date		
	2012	2013	+ / -	2012	2013	+ / -
Closed Sales	18	8	- 55.6%	54	56	+ 3.7%
In Contracts	--	41	--	--	91	--
Average Sales Price	\$299,022	\$314,810	+ 5.3%	\$291,733	\$323,350	+ 10.8%
Median Sales Price**	\$280,000	\$286,000	+ 2.1%	\$279,618	\$311,764	+ 11.5%
Average Price per Square Foot**	\$117.94	\$113.43	- 4.2%	\$110.64	\$113.41	+ 1.8%
Percent of Original List Price Received**	95.5%	95.6%	+ 0.1%	92.5%	93.8%	+ 1.4%
Percent of Last List Price Received**	97.0%	96.3%	- 0.7%	96.4%	95.7%	- 0.7%
Days on Market Until Sale	125	43	- 65.6%	134	70	- 47.8%
New Listings	17	33	+ 94.1%	96	94	- 2.1%
Median List Price of New Listings	\$398,700	\$314,800	- 21.0%	\$308,700	\$349,894	+ 13.3%
Median List Price at Time of Sale	\$293,700	\$299,900	+ 2.1%	\$281,450	\$319,700	+ 13.6%
Inventory of Homes for Sale	--	59	--	--	--	--
Months Supply of Inventory	--	2.9	--	--	--	--

** Does not account for seller concessions.

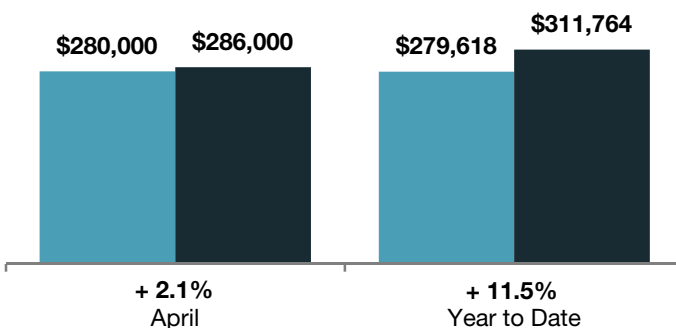
Closed Sales

■ 2012 ■ 2013



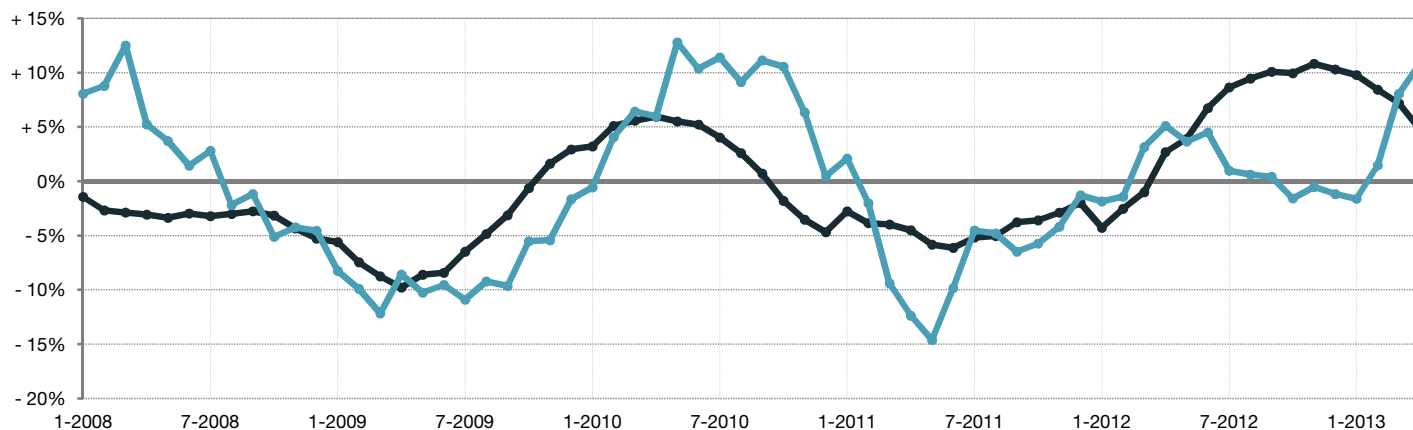
Median Sales Price

■ 2012 ■ 2013



Change in Median Sales Price from Prior Year (6-Month Average)†

All MLS —●—
Powell (Corp.) —●—



† Each dot represents the change in median sales price from the prior year using a 6-month weighted average. This means that each of the 6 months used in a dot are proportioned according to their share of sales during that period. | Current as of May 12, 2013. All data from Columbus Board of REALTORS® Multiple Listing Service (MLS). | Powered by 10K Research and Marketing. | Page 1 of 2

Local Market Update – April 2013

A RESEARCH TOOL PROVIDED BY THE COLUMBUS BOARD OF REALTORS®
 BASED ON RESIDENTIAL LISTING DATA ONLY

Powell (Corp.)

Delaware County

