

# Local Market Update – April 2013

A RESEARCH TOOL PROVIDED BY THE COLUMBUS BOARD OF REALTORS®  
BASED ON RESIDENTIAL LISTING DATA ONLY

## Upper Arlington City School District

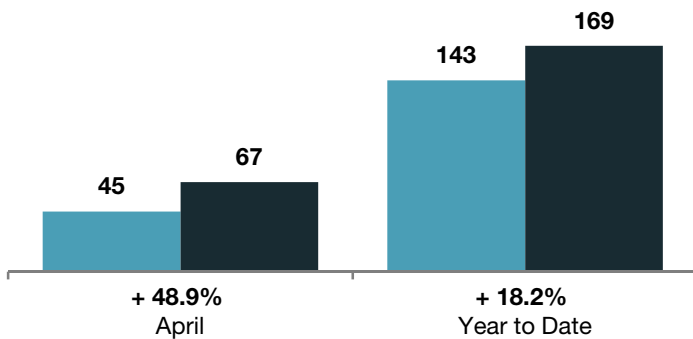
Franklin County

	April			Year to Date		
	2012	2013	+ / -	2012	2013	+ / -
Closed Sales	45	67	+ 48.9%	143	169	+ 18.2%
In Contracts	--	127	--	--	272	--
Average Sales Price	\$311,244	\$321,617	+ 3.3%	\$301,891	\$331,503	+ 9.8%
Median Sales Price**	\$259,000	\$287,000	+ 10.8%	\$267,250	\$292,450	+ 9.4%
Average Price per Square Foot**	\$152.64	\$153.47	0.0%	\$145.74	\$152.19	+ 4.1%
Percent of Original List Price Received**	90.7%	95.7%	+ 5.5%	90.3%	95.0%	+ 5.2%
Percent of Last List Price Received**	95.2%	98.0%	+ 2.9%	95.0%	97.5%	+ 2.6%
Days on Market Until Sale	101	47	- 53.5%	108	60	- 44.4%
New Listings	102	101	- 1.0%	278	295	+ 6.1%
Median List Price of New Listings	\$304,950	\$335,000	+ 9.9%	\$309,950	\$323,900	+ 4.5%
Median List Price at Time of Sale	\$268,500	\$289,900	+ 8.0%	\$283,900	\$304,500	+ 7.3%
Inventory of Homes for Sale	--	123	--	--	--	--
Months Supply of Inventory	--	2.3	--	--	--	--

\*\* Does not account for seller concessions.

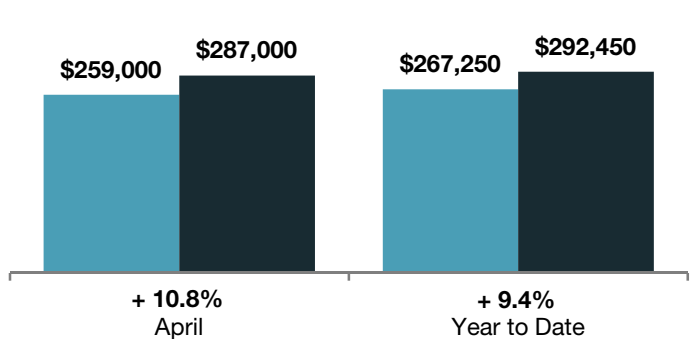
### Closed Sales

■ 2012 ■ 2013



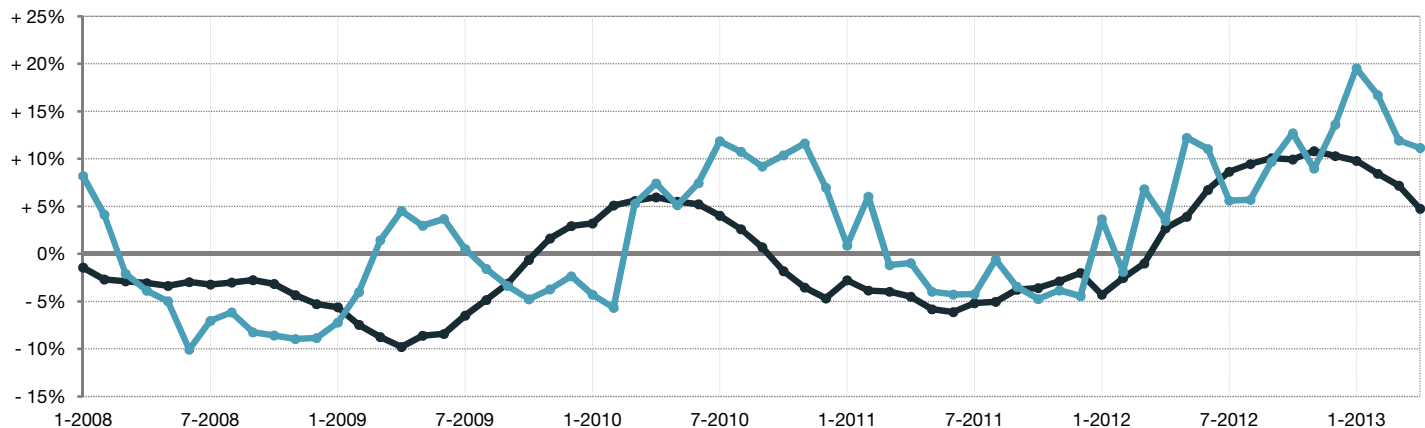
### Median Sales Price

■ 2012 ■ 2013



### Change in Median Sales Price from Prior Year (6-Month Average)†

All MLS — Upper Arlington City School District



† Each dot represents the change in median sales price from the prior year using a 6-month weighted average. This means that each of the 6 months used in a dot are proportioned according to their share of sales during that period. | Current as of May 12, 2013. All data from Columbus Board of REALTORS® Multiple Listing Service (MLS). | Powered by 10K Research and Marketing. | Page 1 of 2

# Local Market Update – April 2013

A RESEARCH TOOL PROVIDED BY THE COLUMBUS BOARD OF REALTORS®  
 BASED ON RESIDENTIAL LISTING DATA ONLY

## Upper Arlington City School District

Franklin County

