

# Local Market Update – October 2013

A RESEARCH TOOL PROVIDED BY THE COLUMBUS REALTORS®  
BASED ON RESIDENTIAL LISTING DATA ONLY



## Johnstown-Monroe Local School District

Delaware and Licking Counties

### October

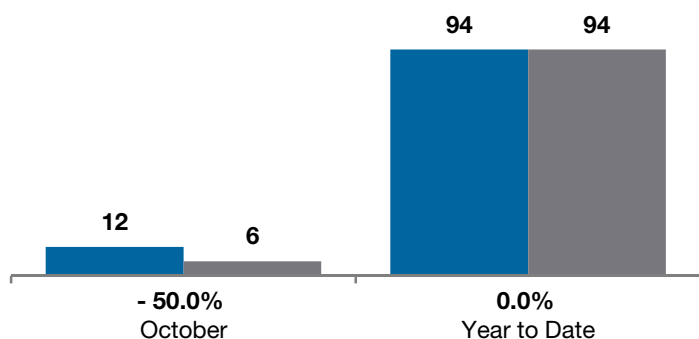
### Year to Date

	2012	2013	+ / -	2012	2013	+ / -
Closed Sales	12	6	- 50.0%	94	94	0.0%
In Contracts	--	9	--	--	104	--
Average Sales Price	\$168,483	\$155,366	- 7.8%	\$161,680	\$182,481	+ 12.9%
Median Sales Price**	\$170,750	\$164,450	- 3.7%	\$155,500	\$169,950	+ 9.3%
Average Price per Square Foot**	\$89.21	\$88.04	- 1.1%	\$85.80	\$91.98	+ 7.0%
Percent of Original List Price Received**	94.8%	96.1%	+ 1.4%	92.2%	94.6%	+ 2.6%
Percent of Last List Price Received**	96.3%	95.8%	- 0.5%	95.1%	97.2%	+ 2.2%
Days on Market Until Sale	118	30	- 74.6%	90	70	- 22.2%
New Listings	14	18	+ 28.6%	147	149	+ 1.4%
Median List Price of New Listings	\$177,400	\$161,900	- 8.7%	\$159,900	\$177,900	+ 11.3%
Median List Price at Time of Sale	\$177,400	\$164,900	- 7.0%	\$159,900	\$173,950	+ 8.8%
Inventory of Homes for Sale	--	52	--	--	--	--
Months Supply of Inventory	--	5.3	--	--	--	--

\*\* Does not account for seller concessions.

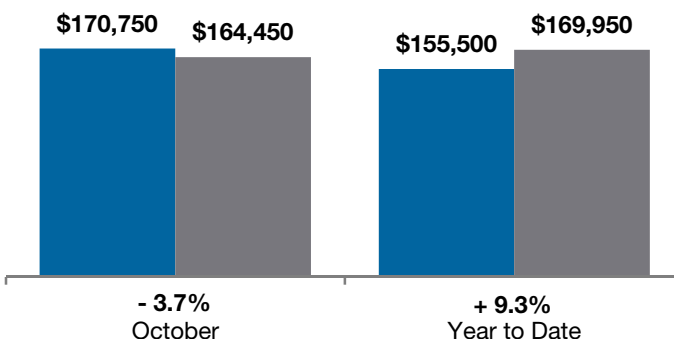
### Closed Sales

■ 2012 ■ 2013



### Median Sales Price

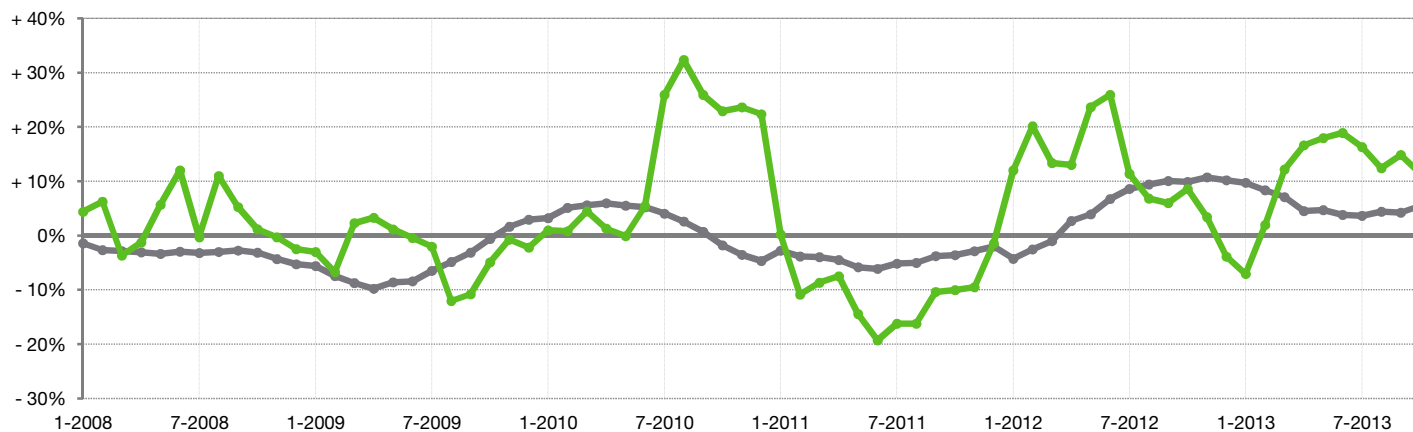
■ 2012 ■ 2013



### Change in Median Sales Price from Prior Year (6-Month Average)†

All MLS —

Johnstown-Monroe Local School District —



† Each dot represents the change in median sales price from the prior year using a 6-month weighted average. This means that each of the 6 months used in a dot are proportioned according to their share of sales during that period. | Current as of November 12, 2013. All data from Columbus REALTORS® Multiple Listing Service (MLS). | Powered by 10K Research and Marketing. | Page 1 of 2

# Local Market Update – October 2013

A RESEARCH TOOL PROVIDED BY THE COLUMBUS REALTORS®  
 BASED ON RESIDENTIAL LISTING DATA ONLY

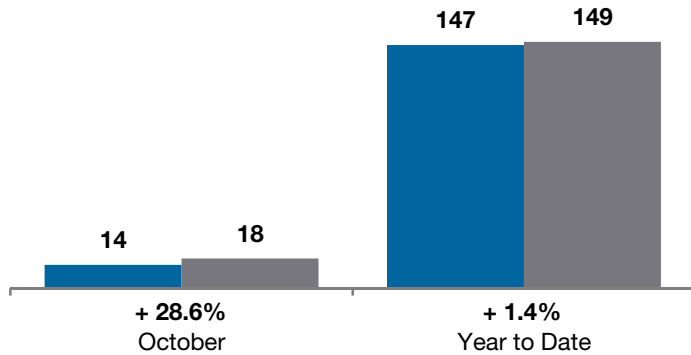


## Johnstown-Monroe Local School District

Delaware and Licking Counties

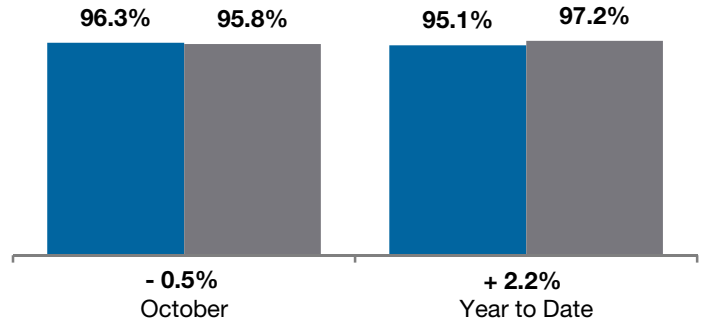
### New Listings

■ 2012 ■ 2013



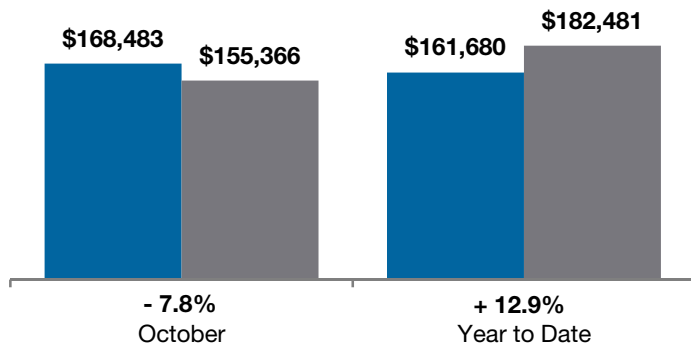
### Pct of Last List Price Received

■ 2012 ■ 2013



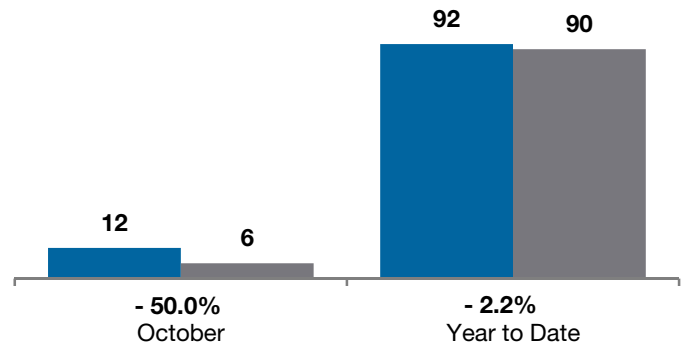
### Average Sales Price

■ 2012 ■ 2013



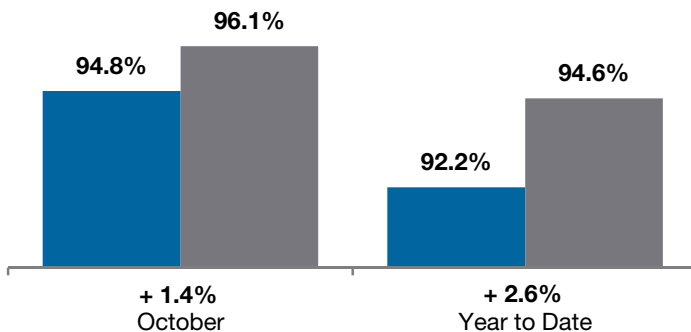
### Single Family Sales

■ 2012 ■ 2013



### Pct. of Orig. List Price Received

■ 2012 ■ 2013



### Condo Sales

■ 2012 ■ 2013

