

Local Market Update – October 2013

A RESEARCH TOOL PROVIDED BY THE COLUMBUS REALTORS®
BASED ON RESIDENTIAL LISTING DATA ONLY



Newark City School District

Licking County

October

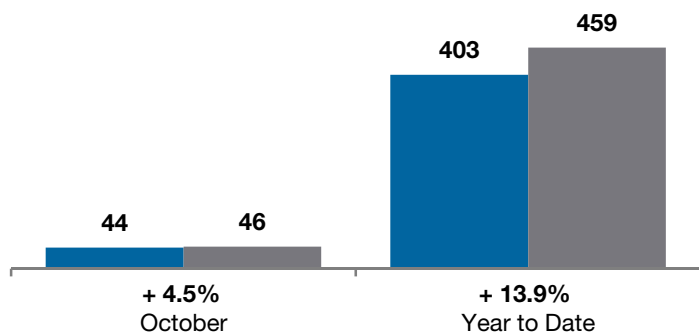
Year to Date

	2012	2013	+ / -	2012	2013	+ / -
Closed Sales	44	46	+ 4.5%	403	459	+ 13.9%
In Contracts	--	47	--	--	492	--
Average Sales Price	\$88,549	\$88,054	- 0.6%	\$93,096	\$94,184	+ 1.2%
Median Sales Price**	\$85,000	\$87,450	+ 2.9%	\$83,540	\$86,000	+ 2.9%
Average Price per Square Foot**	\$61.11	\$62.56	+ 3.3%	\$61.40	\$62.68	+ 3.3%
Percent of Original List Price Received**	89.5%	89.9%	+ 0.4%	90.1%	90.1%	0.0%
Percent of Last List Price Received**	93.7%	93.5%	- 0.2%	94.0%	93.9%	- 0.1%
Days on Market Until Sale	84	91	+ 8.3%	95	91	- 4.2%
New Listings	62	54	- 12.9%	693	771	+ 11.3%
Median List Price of New Listings	\$86,400	\$93,700	+ 8.4%	\$89,900	\$89,500	- 0.4%
Median List Price at Time of Sale	\$88,000	\$97,835	+ 11.2%	\$88,500	\$89,777	+ 1.4%
Inventory of Homes for Sale	--	304	--	--	--	--
Months Supply of Inventory	--	6.7	--	--	--	--

** Does not account for seller concessions.

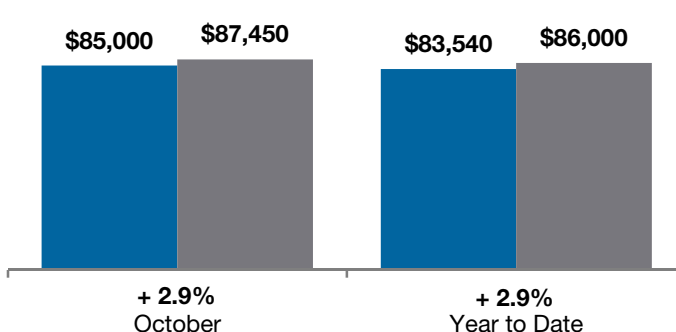
Closed Sales

■ 2012 ■ 2013

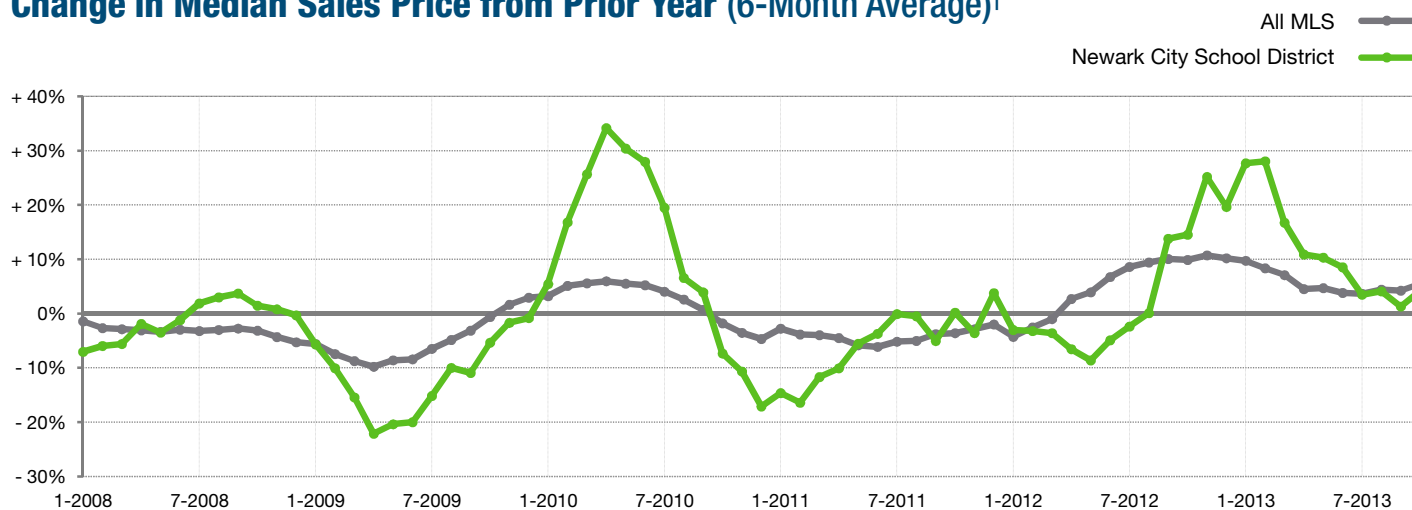


Median Sales Price

■ 2012 ■ 2013



Change in Median Sales Price from Prior Year (6-Month Average)†



† Each dot represents the change in median sales price from the prior year using a 6-month weighted average. This means that each of the 6 months used in a dot are proportioned according to their share of sales during that period. | Current as of November 12, 2013. All data from Columbus REALTORS® Multiple Listing Service (MLS). | Powered by 10K Research and Marketing. | Page 1 of 2

Local Market Update – October 2013

A RESEARCH TOOL PROVIDED BY THE COLUMBUS REALTORS®
 BASED ON RESIDENTIAL LISTING DATA ONLY



Newark City School District

Licking County

